

PLXDC2 Polyclonal Antibody

Catalog number: 12285-1-AP

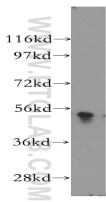
Size: 38 µg/150 µl

Source: Rabbit

Isotype: IgG

Synonyms:

PLXDC2; FLJ14623, plexin domain containing 2, PLXDC2, TEM7R



A375 cells were subjected to SDS PAGE followed by western blot with 12285-1-AP (PLXDC2 antibody) at dilution of 1:500

Background

PLXDC2 (Plexin-domain containing 2), also named tumor endothelial marker 7-related protein (TEM7R), is a single-pass type I membrane protein with some homology to nidogen and to plexins. PLXDC2 is located in tumor endothelium and plays a role in tumor angiogenesis. Three isoforms of PLXDC2 produced by alternative splicing have been described. Recent finding revealed that PLXDC2 is a mitogen for neural progenitors and functions as a novel regulator of the development of different brain regions, suggesting its role in coordinating proliferation and differentiation in the developing nervous system.

Applications

Tested applications:	ELISA, WB
Species specificity:	Human, Mouse, Rat; other species not tested.
Calculated PLXDC2 MW:	480aa, 54 kDa
Observed PLXDC2 MW:	54 kDa
Positive WB detected in	A375 cells, HEK-293 cells, HeLa cells
Recommended dilution:	WB: 1:200-1:2000

Application key: WB = Western blotting, IHC = Immunohistochemistry, IF = Immunofluorescence, IP = Immunoprecipitation

Immunogen information

Immunogen:	Ag2940
GenBank accession number:	BC012885
Gene ID (NCBI):	84898
Full name:	Plexin domain containing 2

Product information

Purification method:	Antigen affinity purification
Storage:	PBS with 0.1% sodium azide and 50% glycerol pH 7.3. Store at -20°C.