

BVES Polyclonal Antibody

Catalog number: 12920-1-AP

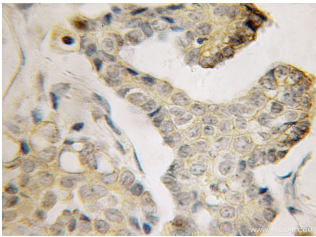
Size: 26 µg/150 µl

Source: Rabbit

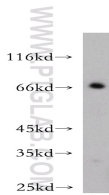
Isotype: IgG

Synonyms:

BVES; BVES, HBVES, POP1,
POPDC1, Popeye protein 1



Immunohistochemical of paraffin-embedded human ovary tumor using 12920-1-AP (BVES antibody) at dilution of 1:100 (under 10x lens)



mouse skeletal muscle tissue were subjected to SDS PAGE followed by western blot with 12920-1-AP (BVES antibody) at dilution of 1:500

Background

BVES, also named as POP1, POPDC1 and hBVES, belongs to the popeye family. It is cell adhesion molecule involved in the establishment and/or maintenance of cell integrity. It is involved in the formation and regulation of the tight junction (TJ) paracellular permeability barrier in epithelial cells. It is also involved in striated muscle regeneration and repair and in the regulation of cell spreading. BVES is expressed in the progenitors of coronary artery smooth muscle cells as well as in differentiated smooth muscle cells.

Applications

Tested applications:	ELISA, IHC, WB
Cited applications:	IHC
Species specificity:	Human, Mouse, Rat; other species not tested.
Cited species:	Human
Calculated BVES MW:	360aa, 41 kDa
Observed BVES MW:	41-70 kDa
Positive WB detected in	Mouse skeletal muscle tissue
Positive IHC detected in	Human ovary tumor tissue
Recommended dilution:	WB: 1:200-1:2000 IHC: 1:20-1:200

Application key: WB = Western blotting, IHC = Immunohistochemistry, IF = Immunofluorescence, IP = Immunoprecipitation

Immunogen information

Immunogen:	Ag3593
GenBank accession number:	BC034425
Gene ID (NCBI):	11149
Full name:	Blood vessel epicardial substance

Product information

Purification method:	Antigen affinity purification
Storage:	PBS with 0.02% sodium azide and 50% glycerol pH 7.3. Store at -20°C.