

PSMA4 Polyclonal Antibody

Catalog number: 11943-2-AP

Size: 50 µg/150 µl

Source: Rabbit

Isotype: IgG

Synonyms:

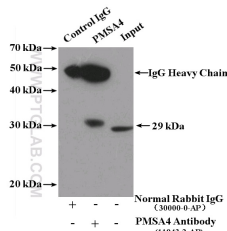
PSMA4; 20S proteasome, HC9,

HsT17706, Macropain subunit

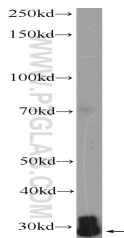
C9, Proteasome component C9,

Proteasome subunit L, PSC9,

PSMA4



IP Result of anti-PSMA4 (IP:11943-2-AP, 4µg; Detection:11943-2-AP 1:500) with BxPC-3 cells lysate 2800µg.



K-562 cells were subjected to SDS PAGE followed by western blot with 11943-2-AP (PSMA4 Antibody) at dilution of 1:1000

Applications

Tested applications:	ELISA, WB, IP
Species specificity:	Human, Mouse, Rat; other species not tested.
Calculated PSMA4 MW:	237aa, 27 kDa
Observed PSMA4 MW:	29 kDa
Positive WB detected in	K-562 cells, BxPC-3 cells, mouse kidney tissue, mouse spleen tissue, U-937 cells
Positive IP detected in	BxPC-3 cells
Recommended dilution:	WB: 1:500-1:5000 IP: 1:200-1:2000

Application key: WB = Western blotting, IHC = Immunohistochemistry, IF = Immunofluorescence, IP = Immunoprecipitation

Immunogen information

Immunogen:	Ag2542
GenBank accession number:	BC056249
Gene ID (NCBI):	5685
Full name:	Proteasome (prosome, macropain) subunit, alpha type, 4

Product information

Purification method:	Antigen affinity purification
Storage:	PBS with 0.1% sodium azide and 50% glycerol pH 7.3. Store at -20°C.