

EPB41L1 Polyclonal Antibody

Catalog number: 13440-1-AP

Size: 33 µg/150 µl

Source: Rabbit

Isotype: IgG

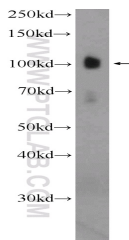
Synonyms:

EPB41L1; 4.1N, Band 4.1 like

protein 1, DKFZp686H17242,

EPB41L1, KIAA0338, Neuronal

protein 4.1



mouse brain tissue were subjected to SDS PAGE followed by western blot with 13440-1-AP(EPB41L1 Antibody) at dilution of 1:600

Applications

Tested applications:	ELISA, WB
Species specificity:	Human,Mouse,Rat; other species not tested.
Calculated EPB41L1 MW:	880aa,98 kDa
Observed EPB41L1 MW:	100-130 kDa
Positive WB detected in	Mouse brain tissue
Recommended dilution:	WB: 1:200-1:2000

Application key: WB = Western blotting, IHC = Immunohistochemistry, IF = Immunofluorescence, IP = Immunoprecipitation

Immunogen information

Immunogen:	Ag4250
GenBank accession number:	BC040259
Gene ID (NCBI):	2036
Full name:	Erythrocyte membrane protein band 4.1-like 1

Product information

Purification method:	Antigen affinity purification
Storage:	PBS with 0.1% sodium azide and 50% glycerol pH 7.3. Store at -20°C.