

PAX8 Polyclonal Antibody

Catalog number: 10336-1-AP

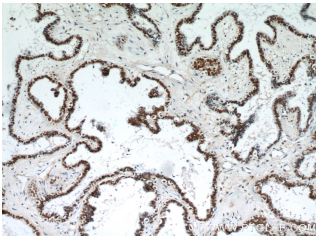
Size: 35 µg/150 µl

Source: Rabbit

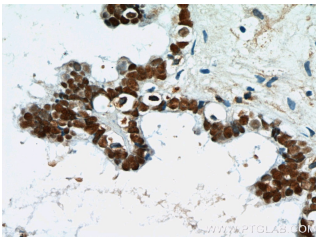
Isotype: IgG

Synonyms:

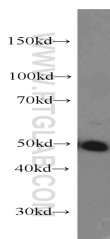
PAX8; paired box 8, Paired box protein Pax 8, PAX8



Immunohistochemical of paraffin-embedded human ovary tumor using 10336-1-AP (PAX8 antibody) at dilution of 1:50 (under 10x lens)



Immunohistochemical of paraffin-embedded human ovary tumor using 10336-1-AP (PAX8 antibody) at dilution of 1:50 (under 40x lens)



SKOV-3 cells were subjected to SDS PAGE followed by western blot with 10336-1-AP (PAX8 antibody) at dilution of 1:1000

Background

PAX8 is a member of the paired box (PAX) family of transcription factors, typically containing a paired box domain and a paired-type homeodomain. It is expressed during organogenesis of the thyroid gland, kidney and Mullerian system. It is thought to regulate the expression of Wilms tumor suppressor (WT1) gene and mutations in PAX8 have been associated with Wilms tumor cells, thyroid and ovarian carcinomas. PAX8 is a useful marker in distinguishing ovarian carcinomas from mammary carcinomas (PMID: 18724243). PAX8 is expressed in a high percentage of ovarian serous, endometrioid, and clear cell carcinomas, but only rarely in primary ovarian mucinous adenocarcinomas.

PAX8 has 5 isoforms with calculated MW 31kd, 34kd, 41kd, 43kd and 48kd. And there is a 60kd band corresponding to the electrophoretic mobility of PAX8 (PMID:15650356). Proteintech's 10336-1-AP antibody has cross-reactivities with the other PAX family members.

Applications

Tested applications:	ELISA, WB, IHC, IP, FC, IF
Cited applications:	IF, IHC, WB
Species specificity:	Human, Mouse, Rat; other species not tested.
Cited species:	Bovine, human, mouse, rat, zebrafish
Calculated PAX8 MW:	48 kDa
Observed PAX8 MW:	48 kDa, 58 kDa
Positive WB detected in	SKOV-3 cells, HEK-293 cells, HeLa cells, HepG2 cells, NIH/3T3 cells, Raji cells
Positive IP detected in	HeLa cells, SKOV-3 cells
Positive IHC detected in	Human ovary tumor tissue, human brain tissue, human heart tissue, human kidney tissue, human liver tissue, human placenta tissue, human renal cell carcinoma tissue, human spleen tissue, human testis tissue, human thyroid cancer tissue, mouse kidney tissue, rat kidney tissue
Positive IF detected in	SKOV-3 cells
Positive FC detected in	HeLa cells
Recommended dilution:	WB: 1:500-1:5000 IP: 1:500-1:5000 IHC: 1:20-1:200 IF: 1:50-1:500 FC: N/A

Application key: WB = Western blotting, IHC = Immunohistochemistry, IF = Immunofluorescence, IP = Immunoprecipitation

Immunogen information

Immunogen:	Ag0306
GenBank accession number:	BC001060
Gene ID (NCBI):	7849
Full name:	Paired box 8

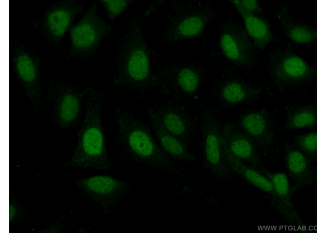
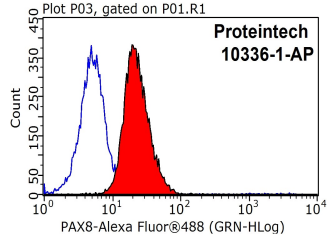
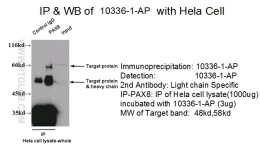
Product information

Purification method:

Antigen affinity purification

Storage:

PBS with 0.1% sodium azide and 50% glycerol pH 7.3. Store at -20°C.



IP result of anti-PAX8 (10336-1-AP for IP and Detection) with HeLa cell.

1X10⁶ HeLa cells were stained with 0.2ug PAX8 antibody (10336-1-AP, red) and control antibody (blue). Fixed with 90% MeOH blocked with 3% BSA (30 min). Alexa Fluor 488-conjugated AffiniPure Goat Anti-Rabbit IgG(H+L) with dilution 1:1000.

Immunofluorescent analysis of (-20 Ethanol) fixed SKOV-3 cells using 10336-1-AP(PAX8 Antibody) at dilution of 1:50 and Alexa Fluor 488-conjugated AffiniPure Goat Anti-Rabbit IgG(H+L)