

DAB2 Polyclonal Antibody

Catalog number: 10109-2-AP

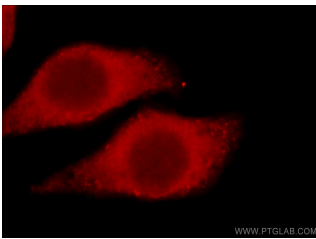
Size: 55 µg/150 µl

Source: Rabbit

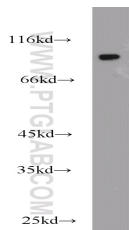
Isotype: IgG

Synonyms:

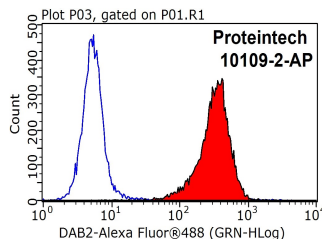
DAB2; DAB2, Disabled homolog 2, DOC 2, DOC2, FLJ26626



Immunofluorescent analysis of HepG2 cells, using DAB2 antibody 10109-2-AP at 1:50 dilution and Rhodamine-labeled goat anti-rabbit IgG (red).



HeLa cells were subjected to SDS PAGE followed by western blot with 10109-2-AP (DAB2 antibody) at dilution of 1:1000



1X10⁶ HepG2 cells were stained with 0.2µg DAB2 antibody (10109-2-AP, red) and control antibody (blue). Fixed with 90% MeOH blocked with 3% BSA (30 min). Alexa Fluor 488-conjugated AffiniPure Goat Anti-Rabbit IgG(H+L) with dilution 1:1000.

Background

DAB2 is a protein of 770 amino acid residues with a predicted molecular weight of 85.5kDa. This gene was initially named DOC2 (for Differentially expressed in Ovarian Cancer) and is distinct from the DOC2A and DOC2B genes (for double C2-like domains, alpha and beta). Human DAB2 has an overall 83% identity with the mouse p96 protein, a putative mitogen-responsive phosphoprotein; homology is strongest in the amino-terminal end of the protein in a region corresponding to the phosphotyrosine interaction domain (PID), and contains multiple SH3 binding motifs. Chromosomal localization by FISH showed that the DAB2 gene is located on 5p13. The expression of DAB2 is down-regulated or absent in all the carcinoma cell lines examined, including prostate and ovarian carcinoma cell lines. The N-terminal domain of DAB2 interacts with Dishevelled-3 (Dvl-3), a signaling mediator of the Wnt pathway. Ectopic expression of DAB2 attenuates canonical Wnt/catenin-mediated signaling, including accumulation of catenin and cyclin D1 induction. DAB2 suppresses both protein kinase C and peptide growth factor-elicited signal pathways via the Ras-mitogen-activated protein kinase pathway. The proline-rich domain of DAB2 also interacts with proteins containing SH3 domain, such as Src and Fgr. The binding of DAB2 to c-Src results in the inactivation of c-Src. All data suggest that DAB2 is a potent tumor suppressor in many cancer types.

Applications

Tested applications:	ELISA, WB, IF, FC, IP
Cited applications:	IHC
Species specificity:	Human, Mouse, Rat; other species not tested.
Cited species:	Human
Calculated DAB2 MW:	82 kDa
Observed DAB2 MW:	96 kDa
Positive WB detected in	HeLa cells, MCF7 cells
Positive IP detected in	HeLa cells
Positive IF detected in	HepG2 cells
Positive FC detected in	HepG2 cells
Recommended dilution:	WB: 1:500-1:5000
	IP: 1:1000-1:10000
	IF: 1:20-1:200
	FC: N/A

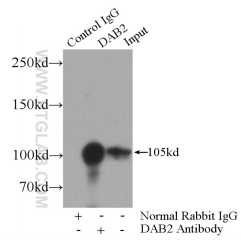
Application key: WB = Western blotting, IHC = Immunohistochemistry, IF = Immunofluorescence, IP = Immunoprecipitation

Immunogen information

Immunogen:	Ag0162
GenBank accession number:	BC003064
Gene ID (NCBI):	1601
Full name:	Disabled homolog 2, mitogen-responsive phosphoprotein (Drosophila)

Product information

Purification method:	Antigen affinity purification
Storage:	PBS with 0.1% sodium azide and 50% glycerol pH 7.3. Store at -20°C.



IP Result of anti-DAB2

(IP:10109-2-AP, 4ug;

Detection:10109-2-AP 1:2000)

with HeLa cells lysate 4000ug.