

Lumican Polyclonal Antibody

Catalog number: 10677-1-AP

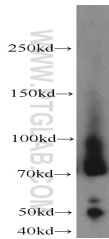
Size: 23 µg/150 µl

Source: Rabbit

Isotype: IgG

Synonyms:

LUM; KSPG lumican, LDC, LUM, lumican, SLRR2D



Jurkat cells were subjected to SDS PAGE followed by western blot with 10677-1-AP(LUM antibody) at dilution of 1:800

Background

Lumican (LUM), a member of the small leucine-rich proteoglycan (SLRP) family, is one of the major extracellular components in interstitial collagenous matrices of the corneal stroma, aorta, skin, skeletal muscle, lung, kidney, bone, cartilage, and intervertebral discs. SLRPs constitute an important fraction of noncollagenous extracellular matrix proteins and have important effects on cell behavior. Lumican regulates collagenous matrix assembly as a keratan sulfate proteoglycan in the cornea and may exist as a glycoprotein in the connective tissues of other organs. Posttranslational modifications lumican goes through can increase its apparent molecular weight to 50-90 kDa. Studies show that lumican participates in the maintenance of tissue homeostasis and modulates cellular functions including cell proliferation, migration, and differentiation. (PMID: 18949819; 22252641; 9761754; 22365843)

Applications

Tested applications:	ELISA, WB
Cited applications:	WB
Species specificity:	Human, Mouse, Rat; other species not tested.
Cited species:	Human
Calculated Lumican MW:	38 kDa
Observed Lumican MW:	65-90 kDa
Positive WB detected in	Jurkat cells
Recommended dilution:	WB: 1:200-1:2000

Application key: WB = Western blotting, IHC = Immunohistochemistry, IF = Immunofluorescence, IP = Immunoprecipitation

Immunogen information

Immunogen:	Ag1106
GenBank accession number:	BC007038
Gene ID (NCBI):	4060
Full name:	Lumican

Product information

Purification method:	Antigen affinity purification
Storage:	PBS with 0.1% sodium azide and 50% glycerol pH 7.3. Store at -20°C.