

HFE2 Polyclonal Antibody

Catalog number: 11758-1-AP

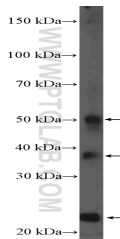
Size: 30 µg/150 µl

Source: Rabbit

Isotype: IgG

Synonyms:

HFE2; Hemochromatosis type 2 protein, Hemojuvelin, HFE2, HFE2A, HJV, JH, RGM domain family member C, RGMC



mouse liver tissue were subjected to SDS PAGE followed by western blot with 11758-1-AP(HFE2 Antibody) at dilution of 1:100

Applications

Tested applications:	ELISA, WB
Species specificity:	Human,Mouse,Rat; other species not tested.
Calculated HFE2 MW:	426aa,45 kDa
Observed HFE2 MW:	23; 38; 50 kDa
Positive WB detected in	Mouse liver tissue
Recommended dilution:	WB: 1:200-1:1000

Application key: WB = Western blotting, IHC = Immunohistochemistry, IF = Immunofluorescence, IP = Immunoprecipitation

Immunogen information

Immunogen:	Ag2354
GenBank accession number:	BC017926
Gene ID (NCBI):	148738
Full name:	Hemochromatosis type 2 (juvenile)

Product information

Purification method:	Antigen affinity purification
Storage:	PBS with 0.1% sodium azide and 50% glycerol pH 7.3. Store at -20°C.