

ERK1/2 Polyclonal Antibody

Catalog number: 11257-1-AP

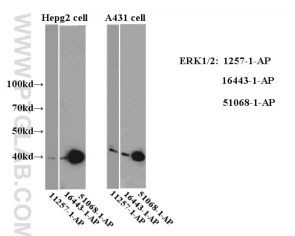
Size: 33 µg/150 µl

Source: Rabbit

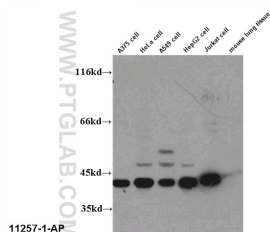
Isotype: IgG

Synonyms:

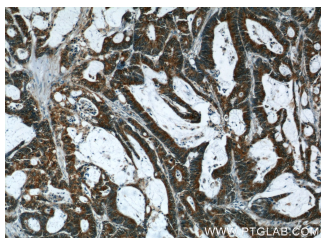
MAPK3; ERK, ERK 1, ERK1, ERK1/2, ERT2, HS44KDAP, HUMKER1A, Insulin stimulated MAP2 kinase, MAP kinase 1, MAP kinase 3, MAP kinase isoform p44, MAPK 1, MAPK 3, MAPK3, p44 ERK1, p44 MAPK, P44ERK1, P44MAPK, PRKM3



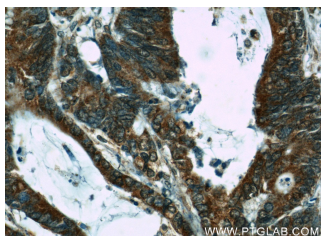
WB results on HepG2 cell and A431 cell.



WB result of 11257-1-AP (ERK1 antibody) with various lysates at dilution of 1:1000.



Immunohistochemical of paraffin-embedded human colon cancer using 11257-1-AP(ERK1 antibody) at dilution of 1:50 (under 10x lens)



Background

ERK1 and ERK2 belongs to the protein kinase superfamily. It is involved in both the initiation and regulation of meiosis, mitosis, and postmitotic functions in differentiated cells by phosphorylating a number of transcription factors such as ELK-1. ERK1/2 catalyzed the reaction: ATP + a protein = ADP + a phosphoprotein. It is activated by tyrosine phosphorylation in response to insulin and NGF. This antibody can recognize both ERK1 and ERK2.

Applications

Tested applications:	ELISA, IHC, IF, WB
Cited applications:	IHC, WB
Species specificity:	Human, Mouse; other species not tested.
Cited species:	Human, rat
Calculated ERK1/2 MW:	44 kDa
Observed ERK1/2 MW:	38-44 kDa
Positive WB detected in	HeLa cells, A375 cells, A549 cells, HepG2 cells, HepG2/A431 cells, Jurkat cells, mouse lung tissue
Positive IHC detected in	Human colon cancer tissue, human breast cancer tissue, human prostate cancer tissue, human prostate hyperplasia tissue
Positive IF detected in	A375 cells, MCF-7 cells, PC-3 cells
Recommended dilution:	WB: 1:200-1:1000 IHC: 1:20-1:200 IF: 1:10-1:100

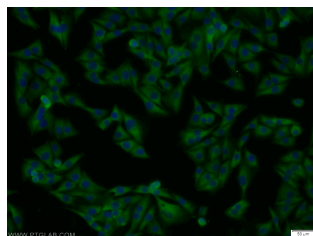
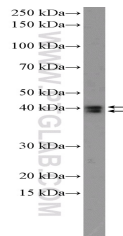
Application key: WB = Western blotting, IHC = Immunohistochemistry, IF = Immunofluorescence, IP = Immunoprecipitation

Immunogen information

Immunogen:	Ag1759
GenBank accession number:	BC013992
Gene ID (NCBI):	5595
Full name:	Mitogen-activated protein kinase 3

Product information

Purification method:	Antigen affinity purification
Storage:	PBS with 0.1% sodium azide and 50% glycerol pH 7.3. Store at -20°C.



Immunohistochemical of paraffin-embedded human colon cancer using 11257-1-AP(ERK1 antibody) at dilution of 1:50 (under 40x lens)

HeLa cells were subjected to SDS PAGE followed by western blot with 11257-1-AP(ERK1 antibody) at dilution of 1:300

Immunofluorescent analysis of A375 cells using 11257-1-AP(ERK1/2 Antibody) at dilution of 1:25 and Alexa Fluor 488-conjugated AffiniPure Goat Anti-Rabbit IgG(H+L)