

## IL2RG Polyclonal Antibody

Catalog number: 11409-1-AP

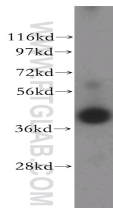
Size: 21 µg/150 µl

Source: Rabbit

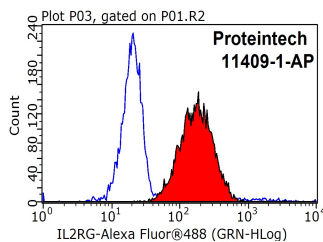
Isotype: IgG

Synonyms:

IL2RG; CD132, IL 2 receptor subunit gamma, IL 2R subunit gamma, IL 2RG, IL2RG, IMD4, p64, SCIDX, SCIDX1



Jurkat cells were subjected to SDS PAGE followed by western blot with 11409-1-AP(IL2RG antibody) at dilution of 1:400



1X10<sup>6</sup> Jurkat cells were stained with 0.2µg IL2RG antibody (11409-1-AP, red) and control antibody (blue). Fixed with 90% MeOH blocked with 3% BSA (30 min). Alexa Fluor 488-conjugated AffiniPure Goat Anti-Rabbit IgG(H+L) with dilution 1:1000.

### Background

The interleukin-2 receptor (IL-2R) is a heterotrimeric receptor consisting of three subunits, alpha (IL2RA), beta (IL2RB), and gamma (IL2RG). IL2RG, also known as CD132, is an important signaling component of many interleukin receptors, including those of interleukin -2, -4, -7 and -21, and is thus referred to as the common gamma chain. Mutations in the gene of IL2RG cause X-linked severe combined immunodeficiency (XSCID), as well as X-linked combined immunodeficiency (XCID), a less severe immunodeficiency disorder.

### Applications

Tested applications:	ELISA, WB, FC
Species specificity:	Human,Mouse,Rat; other species not tested.
Calculated IL2RG MW:	369aa,42 kDa
Observed IL2RG MW:	42kd
Positive WB detected in	Jurkat cells, K-562 cells
Positive FC detected in	Jurkat cells
Recommended dilution:	WB: 1:200-1:2000 FC: N/A

Application key: WB = Western blotting, IHC = Immunohistochemistry, IF = Immunofluorescence, IP = Immunoprecipitation

### Immunogen information

Immunogen:	Ag1911
GenBank accession number:	BC014972
Gene ID (NCBI):	3561
Full name:	Interleukin 2 receptor, gamma (severe combined immunodeficiency)

### Product information

Purification method:	Antigen affinity purification
Storage:	PBS with 0.1% sodium azide and 50% glycerol pH 7.3. Store at -20°C.