

MAGEB4 Polyclonal Antibody

Catalog number: 12786-2-AP

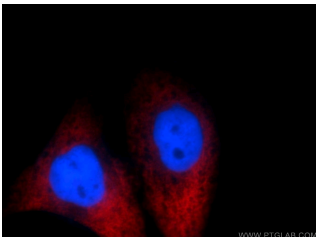
Size: 26 µg/150 µl

Source: Rabbit

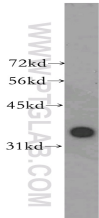
Isotype: IgG

Synonyms:

MAGEB4; CT3.6, MAGE B4 antigen, MAGEB4, melanoma antigen family B, 4, Melanoma associated antigen B4



Immunofluorescent analysis of HepG2 cells, using MAGEB4 antibody 12786-2-AP at 1:25 dilution and Rhodamine-labeled goat anti-rabbit IgG (red). Blue pseudocolor = DAPI (fluorescent DNA dye).



K-562 cells were subjected to SDS PAGE followed by western blot with 12786-2-AP (MAGEB4 antibody) at dilution of 1:300

Applications

Tested applications:	ELISA, WB, IF
Species specificity:	Human; other species not tested.
Calculated MAGEB4 MW:	346aa, 39 kDa
Observed MAGEB4 MW:	39 kDa
Positive WB detected in	K-562 cells
Positive IF detected in	HepG2 cells
Recommended dilution:	WB: 1:500-1:5000 IF: 1:10-1:100

Application key: WB = Western blotting, IHC = Immunohistochemistry, IF = Immunofluorescence, IP = Immunoprecipitation

Immunogen information

Immunogen:	Ag3502
GenBank accession number:	BC032852
Gene ID (NCBI):	4115
Full name:	Melanoma antigen family B, 4

Product information

Purification method:	Antigen affinity purification
Storage:	PBS with 0.1% sodium azide and 50% glycerol pH 7.3. Store at -20°C.