

ATE1 Polyclonal Antibody

Catalog number: 13973-1-AP

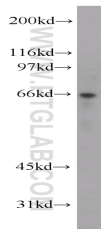
Size: 22 µg/150 µl

Source: Rabbit

Isotype: IgG

Synonyms:

ATE1; MGC26724



Jurkat cells were subjected to SDS PAGE followed by western blot with 13973-1-AP (ATE1 Antibody) at dilution of 1:800

Applications

Tested applications:	ELISA, WB
Species specificity:	Human, mouse, rat; other species not tested.
Positive WB detected in:	Jurkat cells, mouse liver tissue
Calculated ATE1 MW:	59kd
Observed ATE1 MW:	59-65kd
Recommended dilution:	WB: 1:200-1:2000

Application key: WB = Western blotting, IHC = Immunohistochemistry, IF = Immunofluorescence, IP = Immunoprecipitation, FC = Flow cytometry

Immunogen information

Immunogen:	Ag5006
GenBank accession number:	BC022026
Gene ID (NCBI):	11101
Full name:	Arginyltransferase 1

Product information

Purification method:	Antigen affinity purification
Storage:	PBS with 0.02% sodium azide and 50% glycerol pH 7.3. Store at -20°C.