

## ERO1LB Polyclonal Antibody

Catalog number: 11261-2-AP

Size: 20 µg/150 µl

Source: Rabbit

Isotype: IgG

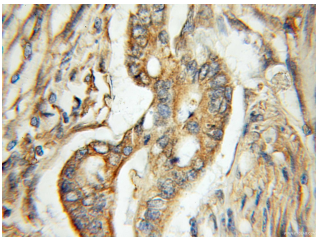
Synonyms:

ERO1LB; ERO1 L beta, ERO1

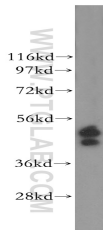
like beta (*S. cerevisiae*), ERO1

like protein beta, ERO1LB,

Oxidoreductin 1 L beta



Immunohistochemical of paraffin-embedded human pancreas cancer using 11261-2-AP (ERO1LB antibody) at dilution of 1:50 (under 40x lens)



HeLa cells were subjected to SDS PAGE followed by western blot with 11261-2-AP (ERO1LB antibody) at dilution of 1:500

### Background

Endoplasmic reticulum oxidoreductases (Eros) are essential for the formation of disulfide bonds. Mammals express two related Ero proteins, Ero1L alpha and Ero1L beta. The two homologous proteins can form homodimers and mixed heterodimers. ERO1-L $\alpha$  and - $\beta$  are highly expressed in organs with a high demand for secretion, consistent with their roles in oxidative folding of ER proteins.

### Applications

Tested applications:	ELISA, WB, IHC
Cited applications:	WB
Species specificity:	Human, Mouse, Rat; other species not tested.
Cited species:	Human, mouse
Calculated ERO1LB MW:	54kd
Observed ERO1LB MW:	40~50kd
Positive WB detected in	HeLa cells, human placenta tissue
Positive IHC detected in	Human pancreas cancer tissue, human oesophagus tissue, human small intestine tissue
Recommended dilution:	WB: 1:500-1:5000 IHC: 1:20-1:200

Application key: WB = Western blotting, IHC = Immunohistochemistry, IF = Immunofluorescence, IP = Immunoprecipitation

### Immunogen information

Immunogen:	Ag1776
GenBank accession number:	BC032823
Gene ID (NCBI):	56605
Full name:	ERO1-like beta ( <i>S. cerevisiae</i> )

### Product information

Purification method:	Antigen affinity purification
Storage:	PBS with 0.1% sodium azide and 50% glycerol pH 7.3. Store at -20°C.