

## KIF3C Polyclonal Antibody

Catalog number: 14333-1-AP

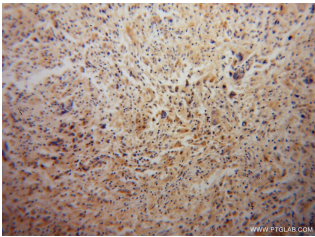
Size: 20 µg/150 µl

Source: Rabbit

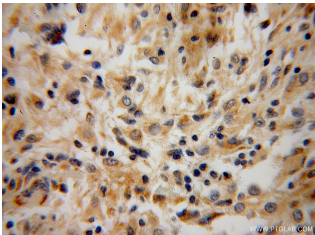
Isotype: IgG

Synonyms:

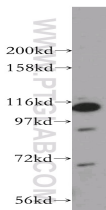
KIF3C; KIF3C, kinesin family member 3C, Kinesin like protein KIF3C



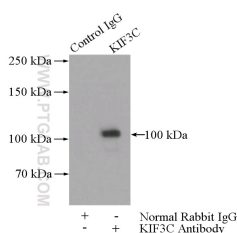
Immunohistochemical of paraffin-embedded human gliomas using 14333-1-AP(KIF3C antibody) at dilution of 1:100 (under 10x lens)



Immunohistochemical of paraffin-embedded human gliomas using 14333-1-AP(KIF3C antibody) at dilution of 1:100 (under 40x lens)



Y79 cells were subjected to SDS PAGE followed by western blot with 14333-1-AP(KIF3C antibody) at dilution of 1:800



IP Result of anti-KIF3C

(IP:14333-1-AP, 4µg;

### Applications

Tested applications:	ELISA, WB, IHC, IP
Species specificity:	Human, Mouse, Rat; other species not tested.
Calculated KIF3C MW:	89 kDa
Observed KIF3C MW:	100 kDa
Positive WB detected in	Y79 cells, HeLa cells, mouse brain tissue
Positive IP detected in	Mouse brain tissue
Positive IHC detected in	Human gliomas tissue
Recommended dilution:	WB: 1:500-1:5000
	IP: 1:200-1:2000
	IHC: 1:20-1:200

Application key: WB = Western blotting, IHC = Immunohistochemistry, IF = Immunofluorescence, IP = Immunoprecipitation

### Immunogen information

Immunogen:	Ag5619
GenBank accession number:	BC042486
Gene ID (NCBI):	3797
Full name:	Kinesin family member 3C

### Product information

Purification method:	Antigen affinity purification
Storage:	PBS with 0.02% sodium azide and 50% glycerol pH 7.3. Store at -20°C.

Detection:14333-1-AP 1:500)  
with mouse brain tissue lysate  
3440ug.