

## STAT1 Polyclonal Antibody

Catalog number: 10144-2-AP

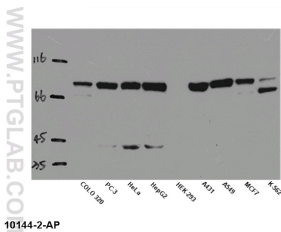
Size: 20 µg/150 µl

Source: Rabbit

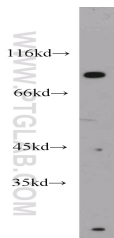
Isotype: IgG

Synonyms:

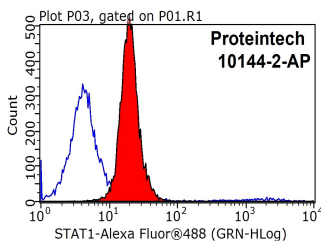
STAT1; DKFZp686B04100, ISGF  
3, STAT1, STAT91



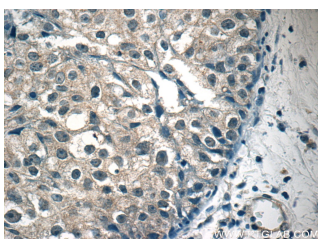
WB result of anti-STAT1 (10144-2-AP)  
in different cells lysates



PC-3 cells were subjected to SDS  
PAGE followed by western blot with  
10144-2-AP (STAT1 antibody) at  
dilution of 1:600



1X10<sup>6</sup> MCF-7 cells were stained with  
0.2 µg STAT1 antibody (10144-2-AP,  
red) and control antibody (blue).  
Fixed with 90% MeOH blocked with  
3% BSA (30 min). Alexa Fluor 488-  
conjugated AffiniPure Goat Anti-  
Rabbit IgG(H+L) with dilution 1:1000.



Immunohistochemistry of

### Background

STAT1 (signal transducers and activators of transcription 1) is a member of the STAT protein family. In response to cytokines and growth factors, STAT family members are phosphorylated by the receptor associated kinases, and then form homo- or heterodimers that translocate to the cell nucleus where they act as transcription activators. Various ligands, including interferons- and - $\gamma$ , EGF, PDGF and IL-6, can activate STAT1. STAT1 protein mediates the expression of a variety of genes, which is thought to be important for cell viability in response to different cell stimuli and pathogens. This antibody is a rabbit polyclonal antibody raised against residues near the N terminus of human STAT1.

### Applications

Tested applications:	ELISA, WB, IHC, FC, IP
Cited applications:	IF, IP, WB
Species specificity:	Human, Rat; other species not tested.
Cited species:	Human, mouse, rat
Calculated STAT1 MW:	83 kDa
Observed STAT1 MW:	84 kDa
Positive WB detected in	PC-3 cells, A431 cells, HEK-293 cells, HepG2 cells
Positive IP detected in	PC-3 cells
Positive IHC detected in	Human breast cancer tissue, human testis tissue
Positive FC detected in	MCF-7 cells
Recommended dilution:	WB: 1:200-1:2000 IP: 1:200-1:2000 IHC: 1:20-1:200 FC: N/A

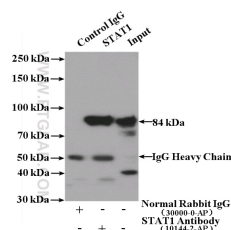
Application key: WB = Western blotting, IHC = Immunohistochemistry, IF = Immunofluorescence, IP = Immunoprecipitation

### Immunogen information

Immunogen:	Ag0199
GenBank accession number:	BC002704
Gene ID (NCBI):	6772
Full name:	Signal transducer and activator of transcription 1, 91kDa

### Product information

Purification method:	Antigen affinity purification
Storage:	PBS with 0.1% sodium azide and 50% glycerol pH 7.3. Store at -20°C.



IP Result of anti-STAT1

paraffin-embedded human  
breast cancer tissue slide  
using 10144-2-AP( STAT1  
Antibody) at dilution of 1:50  
(under 40x lens)

(IP:10144-2-AP, 4ug;  
Detection:10144-2-AP 1:500)  
with PC-3 cells lysate 3200ug.