

Recoverin PolyAb Antibody

Catalog number: 10073-1-AP

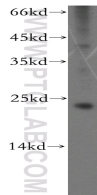
Size: 42 µg/150 µl

Source: Rabbit

Isotype: IgG

Synonyms:

RCVRN; RCV1



mouse eye tissue were subjected to SDS PAGE followed by western blot with 10073-1-AP(Recoverin Antibody) at dilution of 1:600

Background

Recoverin, belonging to a family of the neuronal calcium sensor (NCS) proteins, has a restricted expression in retinal photoreceptors or neurons or neuroendocrine cells. It has been suggested to play a role in light and dark adaptation by regulating rhodopsin phosphorylation. Recently, it has been found that autoantibodies against recoverin (24 kDa) have been strongly associated with cancer -associated retinopathy (CAR) syndrome, a paraneoplastic disease of the retina. But functions of recoverin in cancer cells remain unknown.

Applications

Tested applications:	ELISA, WB, IF
Cited applications:	IHC, WB
Species specificity:	Human, Mouse, Rat; other species not tested.
Cited species:	Human, rat
Positive WB detected in:	Mouse eye tissue, Y79 cells
Calculated Recoverin MW:	24kd
Observed Recoverin MW:	23kd
Positive IF detected in:	MCF-7 cells
Recommended dilution:	WB: 1:200-1:2000 IF: 1:20-1:50

Application key: WB = Western blotting, IHC = Immunohistochemistry, IF = Immunofluorescence, IP = Immunoprecipitation, FC = Flow cytometry

Immunogen information

Immunogen:	Ag0119
GenBank accession number:	BC001720
Gene ID (NCBI):	5957
Full name:	Recoverin

Product information

Purification method:	Antigen affinity purification
Storage:	PBS with 0.1% sodium azide and 50% glycerol pH 7.3. Store at -20°C.