

HSPA1L Polyclonal Antibody

Catalog number: 13970-1-AP

Size: 36 µg/150 µl

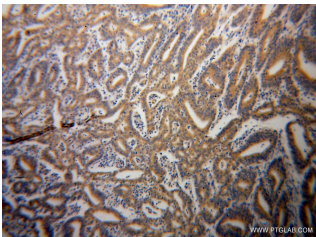
Source: Rabbit

Isotype: IgG

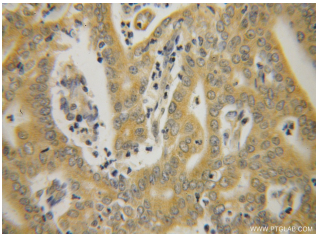
Synonyms:

HSPA1L; Heat shock 70 kDa protein 1L, HSP70 1L, HSP70

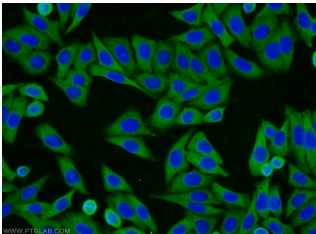
HOM, HSP70T, HSPA1L, hum70t



Immunohistochemical of paraffin-embedded human endometrial cancer using 13970-1-AP (HSPA1L antibody) at dilution of 1:100 (under 10x lens)



Immunohistochemical of paraffin-embedded human endometrial cancer using 13970-1-AP (HSPA1L antibody) at dilution of 1:100 (under 40x lens)



Immunofluorescent analysis of HepG2 cells using 13970-1-AP (HSPA1L Antibody) at dilution of 1:25 and Alexa Fluor 594-conjugated AffiniPure Goat Anti-Rabbit IgG(H+L)

Background

HSPA1L (Hsp70-like protein 1, also known as HSP70-hom) is a member of Hsp70 family of heat shock proteins. Recently it has been reported that HSPA1L can interact with TLR4, activate dendritic cells and induce Th1 Response. This antibody well recognized the endogenous HSPA1L protein in multiple cell lines. (21730052)

Applications

Tested applications:	ELISA, IHC, IF, WB, IP
Species specificity:	Human, Mouse, Rat; other species not tested.
Calculated HSPA1L MW:	70 kDa
Observed HSPA1L MW:	70 kDa
Positive WB detected in	Mouse liver tissue, HeLa cells, HepG2 cells, MCF7 cells, rat testis tissue
Positive IP detected in	HepG2 cells
Positive IHC detected in	Human endometrial cancer tissue, human breast cancer tissue
Positive IF detected in	HepG2 cells
Recommended dilution:	WB: 1:500-1:5000 IP: 1:500-1:5000 IHC: 1:20-1:200 IF: 1:10-1:100

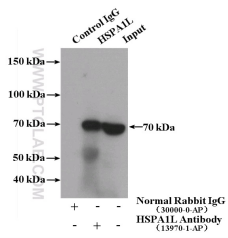
Application key: WB = Western blotting, IHC = Immunohistochemistry, IF = Immunofluorescence, IP = Immunoprecipitation

Immunogen information

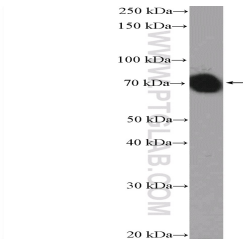
Immunogen:	Ag4995
GenBank accession number:	BC034483
Gene ID (NCBI):	3305
Full name:	Heat shock 70kDa protein 1-like

Product information

Purification method:	Antigen affinity purification
Storage:	PBS with 0.02% sodium azide and 50% glycerol pH 7.3. Store at -20°C.



**IP Result of anti-HSPA1L
(IP:13970-1-AP, 4ug;
Detection:13970-1-AP 1:1000)
with HepG2 cells lysate
1800ug.**



**mouse liver tissue were
subjected to SDS PAGE
followed by western blot with
13970-1-AP(HSPA1L
Antibody) at dilution of
1:1000**