

MICB Polyclonal Antibody

Catalog number: 14325-1-AP

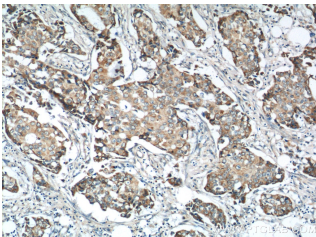
Size: 54 µg/150 µl

Source: Rabbit

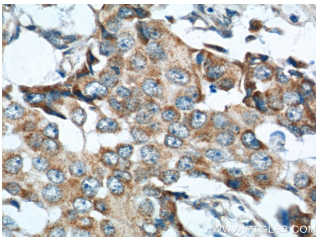
Isotype: IgG

Synonyms:

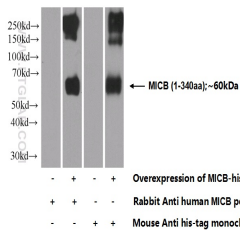
MICB; MIC B, MICB, PERB11.2



Immunohistochemistry of paraffin-embedded human breast cancer tissue slide using 14325-1-AP(MICB Antibody) at dilution of 1:50 (under 10x lens)



Immunohistochemistry of paraffin-embedded human breast cancer tissue slide using 14325-1-AP(MICB Antibody) at dilution of 1:50 (under 40x lens)



Transfected HEK-293 cells were subjected to SDS PAGE followed by western blot with 14325-1-AP(MICB Antibody) at dilution of 1:3000

Applications

Tested applications:	ELISA, IHC, WB
Species specificity:	Human; other species not tested.
Calculated MICB MW:	43 kDa
Observed MICB MW:	
Positive WB detected in	Transfected HEK-293 cells
Positive IHC detected in	Human breast cancer tissue, human liver cancer tissue
Recommended dilution:	WB: 1:1000-1:10000 IHC: 1:20-1:200

Application key: WB = Western blotting, IHC = Immunohistochemistry, IF = Immunofluorescence, IP = Immunoprecipitation

Immunogen information

Immunogen:	Ag5591
GenBank accession number:	BC044218
Gene ID (NCBI):	4277
Full name:	MHC class I polypeptide-related sequence B

Product information

Purification method:	Antigen affinity purification
Storage:	PBS with 0.1% sodium azide and 50% glycerol pH 7.3. Store at -20°C.