

FAM13A POLYCLONAL ANTIBODY

Catalog Number: 55401-1-AP

1 Publications

Basic Information

Catalog Number:
55401-1-AP

Size:
48 µg/150 µl

Source:
Rabbit

Isotype:
IgG

Purification Method:
Antigen affinity purification

Immunogen Catalog Number:

GenBank Accession Number:
NM_014883

GeneID (NCBI):
10144

Full Name:
family with sequence similarity 13, member A

Calculated MW:
117 kDa

Observed MW:
65kd

Recommended Dilutions:

WB 1:200-1:2000

IHC 1:20-1:200

IF 1:10-1:100

Applications

Tested Applications:
ELISA, WB, IHC, IF

Species Specificity:
Human, Mouse

Positive Controls:

WB : mouse kidney tissue; mouse lung tissue,
mouse ovary tissue, mouse pancreas tissue

IHC : human skeletal muscle tissue; human tonsil
tissue

IF : HeLa cells;

Background Information

FAM13A, also named as FAM13A1 and KIAA0914, belongs to the FAM13 family. It is associated with chronic obstructive pulmonary disease. (PMD: 20173748)
This antibody is specific to FAM13A. It can recognize all the isoforms of FAM13A.

Notable Publications

Author	Pubmed ID	Journal	Application
Rongpeng Li	26371245	J Immunol	WB

Storage

Storage:

Store at -20°C. Stable for one year after shipment.

Storage Buffer:

PBS with 0.02% sodium azide and 50% glycerol pH 7.3.

Aliquoting is unnecessary for -20°C storage

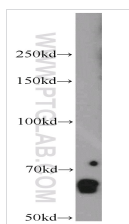
For technical support and original validation data for this
product please contact:

T: 1 (888) 4PTGLAB (1-888-478-4522) (toll
free in USA), or 1(312) 455-8498 (outside
USA)

E: proteintech@ptglab.com
W: ptglab.com

This product is exclusively available under
Proteintech Group brand and is not available to
purchase from any other manufacturer.

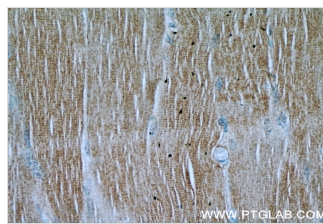
Selected Validation Data



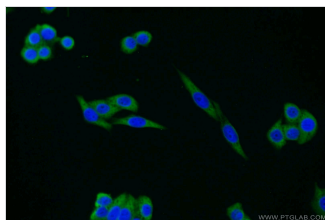
mouse kidney tissue were subjected to SDS PAGE followed by western blot with 55401-1-AP(FAM13A antibody) at dilution of 1:500



Immunohistochemical of paraffin-embedded human skeletal muscle using 55401-1-AP(FAM13A antibody) at dilution of 1:50 (under 10x lens)



Immunohistochemical of paraffin-embedded human skeletal muscle using 55401-1-AP(FAM13A antibody) at dilution of 1:50 (under 40x lens)



Immunofluorescent analysis of HeLa cells using 55401-1-AP(FAM13A Antibody) at dilution of 1:25 and Alexa Fluor 488-conjugated AffiniPure Goat Anti-Rabbit IgG(H+L)