

Melanophilin Polyclonal Antibody

Catalog number: 10338-1-AP

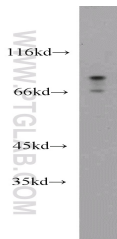
Size: 55 µg/150 µl

Source: Rabbit

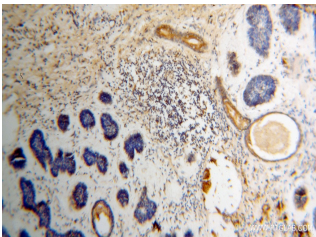
Isotype: IgG

Synonyms:

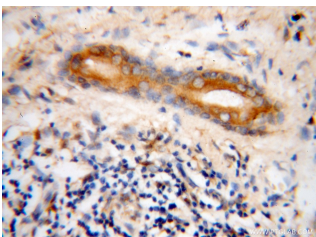
MLPH; Exophilin 3,
melanophilin, MLPH, SLAC2 A,
SLAC2A, Synaptotagmin like
protein 2a



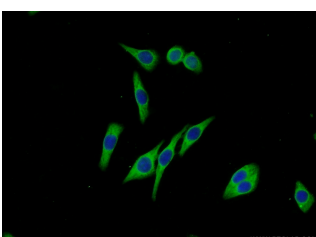
A375 cells were subjected to SDS PAGE followed by western blot with 10338-1-AP(MLPH antibody) at dilution of 1:1000



Immunohistochemical of paraffin-embedded human skin cancer using 10338-1-AP(MLPH antibody) at dilution of 1:50 (under 10x lens)



Immunohistochemical of paraffin-embedded human skin cancer using 10338-1-AP(MLPH antibody) at dilution of 1:50 (under 40x lens)



Immunofluorescent analysis

Background

Melanophilin (Mlph) is a member of the exophilin subfamily of Rab effector proteins. MLPH is a modular protein, forming a ternary complex with the small Ras-related GTPase Rab27A in its GTP-bound form and the motor protein myosin Va. It regulates retention of melanosomes at the peripheral actin cytoskeleton of melanocytes, a process essential for normal mammalian pigmentation. Defects in MLPH are a cause of Griscelli syndrome type 3 (GS3), which is characterized by a silver-gray hair color and abnormal pigment distribution in the hair shaft.

Applications

Tested applications:	ELISA, WB, IHC, IP, IF
Cited applications:	FC, IHC, IP, WB
Species specificity:	Human, Mouse, Rat; other species not tested.
Cited species:	Human
Calculated Melanophilin MW:	66 kDa
Observed Melanophilin MW:	66 kDa, 80 kDa
Positive WB detected in	A375 cells
Positive IP detected in	A375 cells
Positive IHC detected in	Human skin cancer tissue
Positive IF detected in	HeLa cells
Recommended dilution:	WB: 1:200-1:2000 IP: 1:200-1:2000 IHC: 1:20-1:200 IF: 1:20-1:200

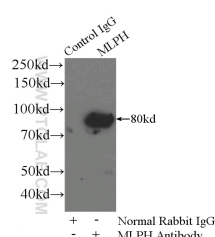
Application key: WB = Western blotting, IHC = Immunohistochemistry, IF = Immunofluorescence, IP = Immunoprecipitation

Immunogen information

Immunogen:	Ag0316
GenBank accession number:	BC001653
Gene ID (NCBI):	79083
Full name:	Melanophilin

Product information

Purification method:	Antigen affinity purification
Storage:	PBS with 0.1% sodium azide and 50% glycerol pH 7.3. Store at -20°C.



IP Result of anti-MLPH

of (-20 Ethanol) fixed HeLa (IP:10338-1-AP, 4ug;
cells using 10338-1-AP(MLPH Detection:10338-1-AP 1:600)
Antibody) at dilution of 1:50 with A375 cells lysate 3600ug.
and Alexa Fluor 488-
conjugated AffiniPure Goat
Anti-Rabbit IgG(H+L)