

STAU1 Polyclonal Antibody

Catalog number: 14225-1-AP

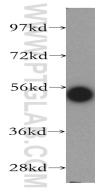
Size: 40 µg/150 µl

Source: Rabbit

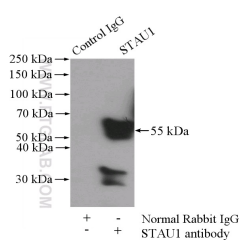
Isotype: IgG

Synonyms:

STAU1; FLJ25010, STAU, STAU1



human brain tissue were subjected to SDS PAGE followed by western blot with 14225-1-AP(STAU1 antibody) at dilution of 1:300



IP Result of anti-STAU1 (IP:14225-1-AP, 4µg; Detection:14225-1-AP 1:500) with mouse brain tissue lysate 3440µg.

Background

Staufen1 (STAU1)-mediated mRNA decay (SMD) degrades translationally active mRNAs that bind the double-stranded (ds)RNA binding protein STAU1 within their 3'-untranslated regions (3'UTRs) [PMID:21307942]. STAU1 can binds to stem structures and protect Dvl2 mRNA from degradation by associating with the secondary structure in the U1 region which is located at 5' position of second U stretch in the U2 region [PMID:17510634]. It has a role in specific positioning of mRNAs at given sites in the cell by cross-linking cytoskeletal and RNA components, and in stimulating their translation at the site.

Applications

Tested applications:	ELISA, WB, IP
Cited applications:	WB
Species specificity:	Human,Mouse,Rat; other species not tested.
Cited species:	Human, recombinant protein
Calculated STAU1 MW:	63 kDa
Observed STAU1 MW:	55 kDa
Positive WB detected in	Human brain tissue, K-562 cells, mouse brain tissue
Positive IP detected in	Mouse brain tissue
Recommended dilution:	WB: 1:500-1:5000 IP: 1:200-1:2000

Application key: WB = Western blotting, IHC = Immunohistochemistry, IF = Immunofluorescence, IP = Immunoprecipitation

Immunogen information

Immunogen:	Ag5464
GenBank accession number:	BC050432
Gene ID (NCBI):	6780
Full name:	Staufen, RNA binding protein, homolog 1 (Drosophila)

Product information

Purification method:	Antigen affinity purification
Storage:	PBS with 0.02% sodium azide and 50% glycerol pH 7.3. Store at -20°C.