

## MCM2 Polyclonal Antibody

Catalog number: 10513-1-AP

Size: 20 µg/150 µl

Source: Rabbit

Isotype: IgG

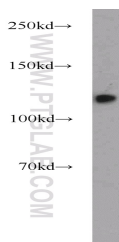
Synonyms:

MCM2; BM28, CCNL1, cdc19,

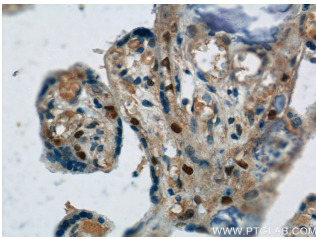
CDCL1, D3S3194, KIAA0030,

MCM2, MITOTIN, Nuclear

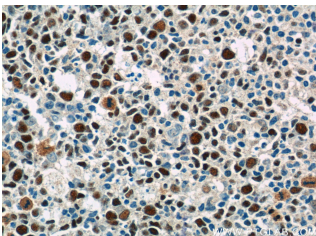
protein BM28



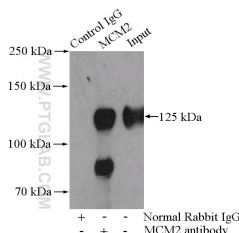
K-562 cells were subjected to SDS PAGE followed by western blot with 10513-1-AP(MCM2 antibody) at dilution of 1:1000



Immunohistochemistry of paraffin-embedded human placenta tissue slide using 10513-1-AP( MCM2 Antibody) at dilution of 1:50 (under 40x lens)



Immunohistochemistry of paraffin-embedded human tonsillitis tissue slide using 10513-1-AP( MCM2 Antibody) at dilution of 1:50 (under 40x lens)



### Background

The MCM2-7 complex forms the core of the replicative helicase which acts as the molecular motor that uses ATP binding and hydrolysis to fuel the unwinding of double-stranded DNA at the replication fork in eukaryotes. This complex is the putative replicative helicase essential for 'once per cell cycle' DNA replication initiation and elongation in eukaryotic cells. MCM2, also named CDCL1 and BM28, is a human nuclear protein that plays an important role in 2 crucial steps of the cell cycle, namely, onset of DNA replication and cell division.

### Applications

Tested applications:	ELISA, WB, IHC, IP
Cited applications:	IHC, WB
Species specificity:	Human, Mouse, Rat; other species not tested.
Cited species:	Human
Calculated MCM2 MW:	102 kDa
Observed MCM2 MW:	116-125 kDa
Positive WB detected in	K-562 cells, HEK-293 cells, HeLa cells, PC-3 cells
Positive IP detected in	HEK-293 cells
Positive IHC detected in	Human tonsillitis tissue, human placenta tissue
Recommended dilution:	WB: 1:200-1:2000
	IP: 1:200-1:2000
	IHC: 1:20-1:200

Application key: WB = Western blotting, IHC = Immunohistochemistry, IF = Immunofluorescence, IP = Immunoprecipitation

### Immunogen information

Immunogen:	Ag0798
GenBank accession number:	BC007670
Gene ID (NCBI):	4171
Full name:	Minichromosome maintenance complex component 2

### Product information

Purification method:	Antigen affinity purification
Storage:	PBS with 0.1% sodium azide and 50% glycerol pH 7.3. Store at -20°C.

**IP Result of anti-MCM2  
(IP:10513-1-AP, 4ug;  
Detection:10513-1-AP 1:800)  
with HEK-293 cells lysate  
2800ug.**