

MAP7 Polyclonal Antibody

Catalog number: 13446-1-AP

Size: 60 µg/150 µl

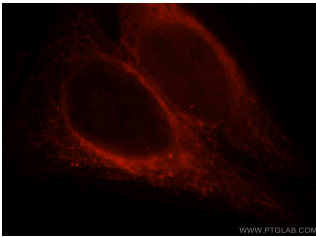
Source: Rabbit

Isotype: IgG

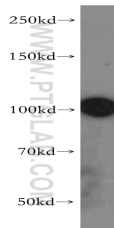
Synonyms:

MAP7; E MAP 115, EMAP115,

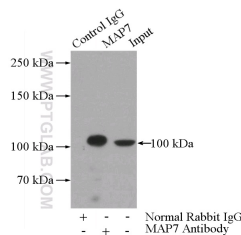
Ensconsin, MAP 7, MAP7



Immunofluorescent analysis of HepG2 cells, using MAP7 antibody 13446-1-AP at 1:25 dilution and Rhodamine-labeled goat anti-rabbit IgG (red).



A549 cells were subjected to SDS PAGE followed by western blot with 13446-1-AP (MAP7 antibody) at dilution of 1:500



IP Result of anti-MAP7 (IP:13446-1-AP, 4µg; Detection:13446-1-AP 1:500) with HeLa cells lysate 2000µg.

Applications

Tested applications:	ELISA, WB, IF, IP
Species specificity:	Human, Mouse, Rat; other species not tested.
Calculated MAP7 MW:	749aa, 84 kDa
Observed MAP7 MW:	100kd
Positive WB detected in:	A549 cells, A431 cells, HeLa cells
Positive IP detected in:	HeLa cells
Positive IF detected in:	HepG2 cells, HeLa cells
Recommended dilution:	WB: 1:500-1:5000 IP: 1:200-1:2000 IF: 1:10-1:100

Application key: WB = Western blotting, IHC = Immunohistochemistry, IF = Immunofluorescence, IP = Immunoprecipitation

Immunogen information

Immunogen:	Ag4276
GenBank accession number:	BC025777
Gene ID (NCBI):	9053
Full name:	Microtubule-associated protein 7

Product information

Purification method:	Antigen affinity purification
Storage:	PBS with 0.02% sodium azide and 50% glycerol pH 7.3. Store at -20°C.