

## LAMR1,RPSA Polyclonal Antibody

Catalog number: 10668-1-AP

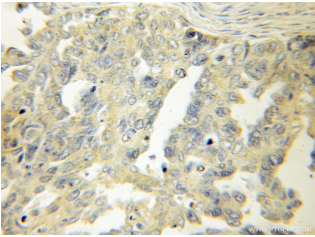
Size: 22 µg/150 µl

Source: Rabbit

Isotype: IgG

Synonyms:

RPSA; 37/67 kDa laminin receptor, 37LRP, 40S ribosomal protein SA, 67 kDa laminin receptor, 67LR, LAMBR, Laminin receptor, Laminin receptor 1, LamR, LAMR1, LBP/p40, LRP, LRP/LR, NEM/1CHD4, p40, ribosomal protein SA, RPSA



Immunohistochemical of paraffin-embedded human ovary tumor using 10668-1-AP(LAMR1,RPSA antibody) at dilution of 1:50 (under 10x lens)

### Background

The ribosomal protein SA (RPSA), previously named 67 kD laminin receptor(67LR), 37 kD laminin receptor precursor (37LRP) and p40 ribosome-associated protein, is a multifunctional protein, that plays a role in a number of pathological processes, such as cancer and prion diseases. It is overexpressed in various cancer cell lines, and the the level of the laminin receptor transcript is higher in colon carcinoma tissue and lung cancer cell line than their normal counterparts. This antibody is a rabbit polyclonal antibody raised against a fusion protein of full length human RPSA. This antibody is specific to RPSA (LAMR1).

### Applications

Tested applications:	ELISA, IHC
Species specificity:	Human,Mouse,Rat; other species not tested.
Calculated LAMR1,RPSA MW:	33 kDa
Observed LAMR1,RPSA MW:	
Positive IHC detected in	Human ovary tumor tissue
Recommended dilution:	IHC: 1:20-1:200

Application key: WB = Western blotting, IHC = Immunohistochemistry, IF = Immunofluorescence, IP = Immunoprecipitation

### Immunogen information

Immunogen:	Ag1055
GenBank accession number:	BC008867
Gene ID (NCBI):	3921
Full name:	Ribosomal protein SA

### Product information

Purification method:	Antigen affinity purification
Storage:	PBS with 0.1% sodium azide and 50% glycerol pH 7.3. Store at -20°C.