

TALDO1 Polyclonal Antibody

Catalog number: 12376-1-AP

Size: 20 µg/150 µl

Source: Rabbit

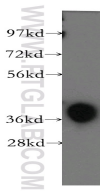
Isotype: IgG

Synonyms:

TALDO1; TAL, TAL H, TALDO,

TALDO1, TALDOR, TALH,

Transaldolase, transaldolase 1



human brain tissue were subjected to SDS PAGE followed by western blot with 12376-1-AP(TALDO1 antibody) at dilution of 1:500

Background

TALDO1 belongs to the transaldolase family which contributes to the generation of NADPH in the nonoxidative phase of the pentose phosphate pathway (PPP) and is important for maintaining metabolite balance. Defects in TALDO1 are the cause of transaldolase 1 deficiency which results in telangiectases of the skin, hepatosplenomegaly, and enlarged clitoris.

Applications

Tested applications:	ELISA, WB
Species specificity:	Human,Mouse,Rat; other species not tested.
Calculated TALDO1 MW:	337aa,38 kDa
Observed TALDO1 MW:	38kd
Positive WB detected in	Human brain tissue, COLO 320 cells, human placenta tissue
Recommended dilution:	WB: 1:500-1:5000

Application key: WB = Western blotting, IHC = Immunohistochemistry, IF = Immunofluorescence, IP = Immunoprecipitation

Immunogen information

Immunogen:	Ag3031
GenBank accession number:	BC009680
Gene ID (NCBI):	6888
Full name:	Transaldolase 1

Product information

Purification method:	Antigen affinity purification
Storage:	PBS with 0.1% sodium azide and 50% glycerol pH 7.3. Store at -20°C.