

## GATA2 Polyclonal Antibody

Catalog number: 11103-1-AP

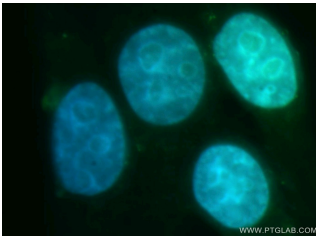
Size: 54 µg/150 µl

Source: Rabbit

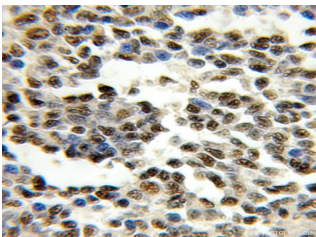
Isotype: IgG

Synonyms:

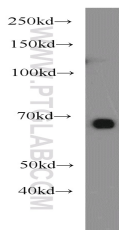
GATA2; FLJ45948, GATA binding protein 2, GATA2, NFE1B



Immunofluorescent analysis of HepG2 cells, using GATA2 antibody 11103-1-AP at 1:100 dilution and FITC-labeled donkey anti-rabbit IgG (green). Blue pseudocolor = DAPI (fluorescent DNA dye).



Immunohistochemical of paraffin-embedded human lymphoma using 11103-1-AP (GATA2 antibody) at dilution of 1:50 (under 10x lens)



HeLa cells were subjected to SDS PAGE followed by western blot with 11103-1-AP (GATA2 antibody) at dilution of 1:300

### Background

GATA2 is a member of GATA family of transcription factors that contains zinc fingers in DNA binding domain. GATA2 acts as a transcriptional activator that regulates endothelin-1 expression in endothelial cells. Together with GATA3, GATA2 regulates adipocyte differentiation through molecular control of the preadipocyte-adipocyte transition. It also affects the activity of Rho inhibitor p190RhoGAP that controls capillary network formation in vitro and retinal angiogenesis in vivo.

### Applications

Tested applications:	ELISA, IHC, IF, WB
Species specificity:	Human, Mouse, Rat; other species not tested.
Calculated GATA2 MW:	
Observed GATA2 MW:	60-66kd
Positive WB detected in	HeLa cells, HEK-293 cells, K-562 cells, mouse heart tissue, mouse liver tissue, Raji cells, rat heart tissue, rat liver tissue
Positive IHC detected in	Human lymphoma tissue
Positive IF detected in	HepG2 cells
Recommended dilution:	WB: 1:200-1:1000 IHC: 1:20-1:200 IF: 1:20-1:200

Application key: WB = Western blotting, IHC = Immunohistochemistry, IF = Immunofluorescence, IP = Immunoprecipitation

### Immunogen information

Immunogen:	Ag1557
GenBank accession number:	BC018988
Gene ID (NCBI):	2624
Full name:	GATA binding protein 2

### Product information

Purification method:	Antigen affinity purification
Storage:	PBS with 0.1% sodium azide and 50% glycerol pH 7.3. Store at -20°C.