

UBE2C Polyclonal Antibody

Catalog number: 12134-2-AP

Size: 20 µg/150 µl

Source: Rabbit

Isotype: IgG

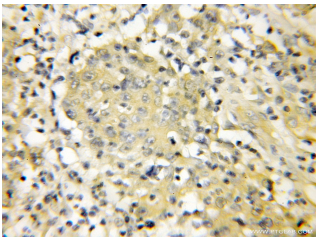
Synonyms:

UBE2C; dJ447F3.2, UBCH10,

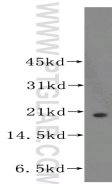
UBE2C, Ubiquitin carrier

protein C, Ubiquitin protein

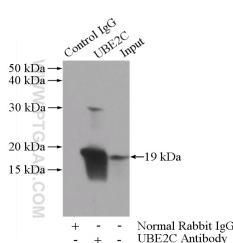
ligase C



Immunohistochemical of paraffin-embedded human colon cancer using 12134-2-AP(UBE2C antibody) at dilution of 1:50 (under 10x lens)



HeLa cells were subjected to SDS PAGE followed by western blot with 12134-2-AP(UBE2C antibody) at dilution of 1:500



IP Result of anti-UBE2C (IP:12134-2-AP, 3µg; Detection:12134-2-AP 1:300) with HeLa cells lysate 2440µg.

Background

UBE2C(Ubiquitin-conjugating enzyme E2 C) is also known as UBCH10 and belongs to the ubiquitin-conjugating enzyme family. It is highly expressed in a variety of human primary tumors, and it is able to promote cell proliferation and malignant transformation(PMID:18703417). UBE2C, along with the E3 ligase of the anaphasepromoting complex (APC), catalyzes the ubiquitination of mitotic cyclins A and B, as well as securin. UBE2C is essential for cell cycle progression, and mutation of its active site cysteine confers a dominant-negative phenotype(PMID:17217624).

Applications

Tested applications:	ELISA, WB, IHC, IP
Species specificity:	Human,Mouse,Rat; other species not tested.
Calculated UBE2C MW:	179aa,20 kDa
Observed UBE2C MW:	20 kDa
Positive WB detected in	HeLa cells
Positive IP detected in	HeLa cells
Positive IHC detected in	Human colon cancer tissue
Recommended dilution:	WB: 1:200-1:2000
	IP: 1:200-1:1000
	IHC: 1:20-1:200

Application key: WB = Western blotting, IHC = Immunohistochemistry, IF = Immunofluorescence, IP = Immunoprecipitation

Immunogen information

Immunogen:	Ag2780
GenBank accession number:	BC016292
Gene ID (NCBI):	11065
Full name:	Ubiquitin-conjugating enzyme E2C

Product information

Purification method:	Antigen affinity purification
Storage:	PBS with 0.1% sodium azide and 50% glycerol pH 7.3. Store at -20°C.