

## UBE2B Polyclonal Antibody

Catalog number: 10733-1-AP

Size: 20 µg/150 µl

Source: Rabbit

Isotype: IgG

Synonyms:

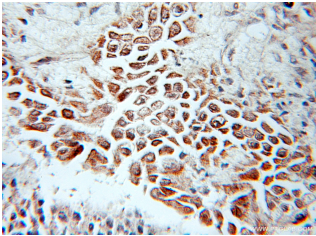
UBE2B; E2 17kDa, HHR6B,

HR6B, RAD6 homolog B,

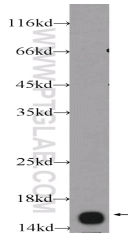
RAD6B, UBC2, UBE2B,

Ubiquitin carrier protein B,

Ubiquitin protein ligase B



Immunohistochemical of paraffin-embedded human ovary tumor using 10733-1-AP(UBE2B antibody) at dilution of 1:10 (under 10x lens)



L02 cells were subjected to SDS PAGE followed by western blot with 10733-1-AP( UBE2B Antibody) at dilution of 1:600

### Background

UBE2B(Ubiquitin-conjugating enzyme E2 B) is also named as RAD6B and belongs to the ubiquitin-conjugating enzyme family. Rad6B is an E2-conjugating enzyme, reported to mediate beta-catenin polyubiquitination and stabilization, thus activating the Wnt signaling pathway(PMID:21118991). The gene encodes a 152 amino acid protein. The Rad6B and Cdc34 proteins are significantly elevated in meiotic and postmeiotic haploid germ cells when chromatin modifications occur(PMID:10373550).

### Applications

Tested applications:	ELISA, IHC, WB
Cited applications:	IF, WB
Species specificity:	Human,Mouse,Rat; other species not tested.
Cited species:	Mouse
Calculated UBE2B MW:	17 kDa
Observed UBE2B MW:	17 kDa
Positive WB detected in	L02 cells, Transfected HEK-293 cells
Positive IHC detected in	Human ovary tumor tissue
Recommended dilution:	WB: 1:200-1:2000 IHC: 1:10-1:100

Application key: WB = Western blotting, IHC = Immunohistochemistry, IF = Immunofluorescence, IP = Immunoprecipitation

### Immunogen information

Immunogen:	Ag1147
GenBank accession number:	BC005979
Gene ID (NCBI):	7320
Full name:	Ubiquitin-conjugating enzyme E2B (RAD6 homolog)

### Product information

Purification method:	Antigen affinity purification
Storage:	PBS with 0.1% sodium azide and 50% glycerol pH 7.3. Store at -20°C.