

ABHD2 Polyclonal Antibody

Catalog number: 14039-1-AP

Size: 20 µg/150 µl

Source: Rabbit

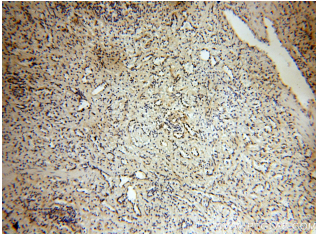
Isotype: IgG

Synonyms:

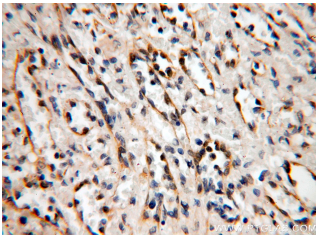
ABHD2; ABHD2, Protein

PHPS1 2, HS1 2, Lung

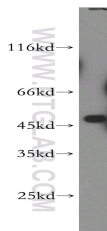
alpha/beta hydrolase 2, LABH2



Immunohistochemical of paraffin-embedded human spleen using 14039-1-AP (ABHD2 antibody) at dilution of 1:100 (under 10x lens)



Immunohistochemical of paraffin-embedded human spleen using 14039-1-AP (ABHD2 antibody) at dilution of 1:100 (under 40x lens)



HEK-293 cells were subjected to SDS PAGE followed by western blot with 14039-1-AP (ABHD2 antibody) at dilution of 1:500

Applications

Tested applications:	ELISA, WB, IHC
Species specificity:	Human, mouse, rat; other species not tested.
Calculated ABHD2 MW:	48 kDa
Observed ABHD2 MW:	48kd
Positive WB detected in	HEK-293 cells, human heart tissue, human testis tissue
Positive IHC detected in	Human spleen
Recommended dilution:	WB: 1:500-1:5000 IHC: 1:20-1:200

Application key: WB = Western blotting, IHC = Immunohistochemistry, IF = Immunofluorescence, IP = Immunoprecipitation

Immunogen information

Immunogen:	Ag5108
GenBank accession number:	BC019248
Gene ID (NCBI):	11057
Full name:	Abhydrolase domain containing 2

Product information

Purification method:	Antigen affinity purification
Storage:	PBS with 0.02% sodium azide and 50% glycerol pH 7.3. Store at -20°C.