

Twinkle Polyclonal Antibody

Catalog number: 13435-1-AP

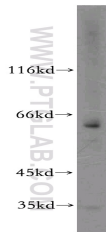
Size: 20 µg/150 µl

Source: Rabbit

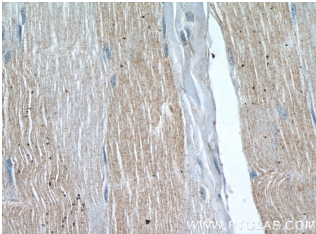
Isotype: IgG

Synonyms:

C10orf2; ATXN8, C10orf2,
FLJ21832, IOSCA, PEO, PEO1,
PEOA3, SANDO, SCA8, Twinkle,
Twinkle protein, mitochondrial,
TWINL



HeLa cells were subjected to SDS PAGE followed by western blot with 13435-1-AP (PEO1 antibody) at dilution of 1:300



Immunohistochemistry of paraffin-embedded human skeletal muscle tissue slide using 13435-1-AP (PEO1 Antibody) at dilution of 1:50 (under 40x lens)

Applications

Tested applications:	ELISA, WB, IHC
Species specificity:	Human, Mouse, Rat; other species not tested.
Calculated Twinkle MW:	684aa, 77 kDa
Observed Twinkle MW:	60kd
Positive WB detected in	HeLa cells, Jurkat cells
Positive IHC detected in	Human skeletal muscle tissue
Recommended dilution:	WB: 1:500-1:5000 IHC: 1:20-1:200

Application key: WB = Western blotting, IHC = Immunohistochemistry, IF = Immunofluorescence, IP = Immunoprecipitation

Immunogen information

Immunogen:	Ag4239
GenBank accession number:	BC033762
Gene ID (NCBI):	56652
Full name:	Chromosome 10 open reading frame 2

Product information

Purification method:	Antigen affinity purification
Storage:	PBS with 0.02% sodium azide and 50% glycerol pH 7.3. Store at -20°C.