

HOMER1 Polyclonal Antibody

Catalog number: 12433-1-AP

Size: 69 µg/150 µl

Source: Rabbit

Isotype: IgG

Synonyms:

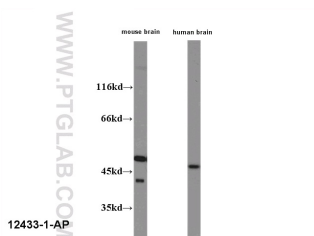
HOMER1; HOMER, Homer 1,
homer homolog 1 (Drosophila),

Homer protein homolog 1,

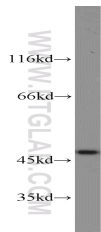
HOMER1, HOMER1A,

HOMER1B, HOMER1C, SYN47,

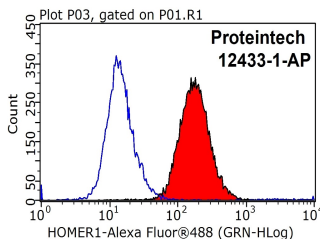
Ves 1



WB result of anti-HOMER1 (12433-1-ap) with mouse brain lysate and human brain lysate.



human brain tissue were subjected to SDS PAGE followed by western blot with 12433-1-AP(HOMER1 antibody) at dilution of 1:1000



1X10⁶ HeLa cells were stained with 0.2µg HOMER1 antibody (12433-1-AP, red) and control antibody (blue). Fixed with 90% MeOH blocked with 3% BSA (30 min). Alexa Fluor 488-conjugated AffiniPure Goat Anti-Rabbit IgG(H+L) with dilution 1:1000.

Background

Human HOMER1, also named as SYN47, belongs to the Homer family. Human HOMER1 has some isoforms: HOMER1a, HOMER1b, HOMER1c, HOMER1e and HOMER1h. Mouse Homer1 also named as Vesl-1 and it has some isoforms: Vesl-1l, Vesl-1m, Vesl-1s, Homer1b, and Homer1d. HOMER1 is a postsynaptic density scaffolding protein. It is a neuronal immediate-early gene (IEG) that is enriched at excitatory synapses and binds mGluRs. In WB, the MW of HOMER1 is about 46-50kd, 40-43kd and 20-26kd.

Applications

Tested applications:	ELISA, WB, FC, IHC, IP
Cited applications:	IF, WB
Species specificity:	Human, Mouse; other species not tested.
Cited species:	Mouse, Rat
Calculated HOMER1 MW:	40 kDa
Observed HOMER1 MW:	46-48 kDa
Positive WB detected in	Human brain tissue, human/mouse brain
Positive IP detected in	Mouse brain tissue
Positive IHC detected in	Mouse brain tissue, human ovary tumor tissue, human pancreas tissue
Positive FC detected in	HeLa cells
Recommended dilution:	WB: 1:500-1:5000 IP: 1:200-1:2000 IHC: 1:20-1:200 FC: N/A

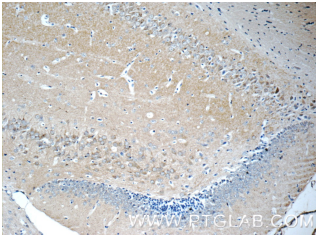
Application key: WB = Western blotting, IHC = Immunohistochemistry, IF = Immunofluorescence, IP = Immunoprecipitation

Immunogen information

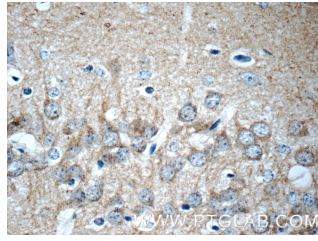
Immunogen:	Ag3109
GenBank accession number:	BC015502
Gene ID (NCBI):	9456
Full name:	Homer homolog 1 (Drosophila)

Product information

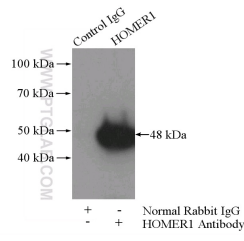
Purification method:	Antigen affinity purification
Storage:	PBS with 0.1% sodium azide and 50% glycerol pH 7.3. Store at -20°C.



Immunohistochemistry of paraffin-embedded mouse brain tissue slide using 12433-1-AP(HOMER1 Antibody) at dilution of 1:50 (under 10x lens)



Immunohistochemistry of paraffin-embedded mouse brain tissue slide using 12433-1-AP(HOMER1 Antibody) at dilution of 1:50 (under 40x lens)



IP Result of anti-HOMER1 (IP:12433-1-AP, 4ug; Detection:12433-1-AP 1:800) with mouse brain tissue lysate 4000ug.