

## ARSG Polyclonal Antibody

Catalog number: 12328-1-AP

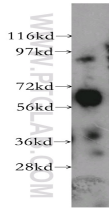
Size: 21 µg/150 µl

Source: Rabbit

Isotype: IgG

Synonyms:

ARSG; ARSG, arylsulfatase G,  
ASG, KIAA1001



human cerebellum tissue were subjected to SDS PAGE followed by western blot with 12328-1-AP(ARSG antibody) at dilution of 1:300

### Applications

Tested applications:	ELISA, WB
Species specificity:	Human,Mouse,Rat; other species not tested.
Calculated ARSG MW:	527aa,57 kDa
Observed ARSG MW:	62 kDa
Positive WB detected in	Human cerebellum tissue, HEK-293 cells
Recommended dilution:	WB: 1:500-1:5000

Application key: WB = Western blotting, IHC = Immunohistochemistry, IF = Immunofluorescence, IP = Immunoprecipitation

### Immunogen information

Immunogen:	Ag2991
GenBank accession number:	BC012375
Gene ID (NCBI):	22901
Full name:	Arylsulfatase G

### Product information

Purification method:	Antigen affinity purification
Storage:	PBS with 0.02% sodium azide and 50% glycerol pH 7.3. Store at -20°C.