

## TBPL1 Polyclonal Antibody

Catalog number: 12258-1-AP

Size: 20 µg/150 µl

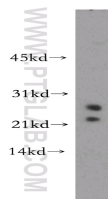
Source: Rabbit

Isotype: IgG

Synonyms:

TBPL1; MGC:8389; MGC:9620;

STUD; TLF; TLP; TRF2



mouse testis tissue were subjected to SDS PAGE followed by western blot with 12258-1-AP(TBPL1 Antibody) at dilution of 1:500

### Applications

Tested applications:	ELISA, WB
Species specificity:	Human, mouse, rat; other species not tested.
Positive WB detected in:	Mouse testis tissue
Calculated TBPL1 MW:	186aa,21kd
Observed TBPL1 MW:	21kd,25kd
Recommended dilution:	WB: 1:200-1:2000

Application key: WB = Western blotting, IHC = Immunohistochemistry, IF = Immunofluorescence, IP = Immunoprecipitation, FC = Flow cytometry

### Immunogen information

Immunogen:	Ag2880
GenBank accession number:	BC017559
Gene ID (NCBI):	9519
Full name:	TBP-like 1

### Product information

Purification method:	Antigen affinity purification
Storage:	PBS with 0.02% sodium azide and 50% glycerol pH 7.3. Store at -20°C.