

SMC3 Polyclonal Antibody

Catalog number: 14185-1-AP

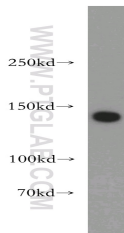
Size: 26 µg/150 µl

Source: Rabbit

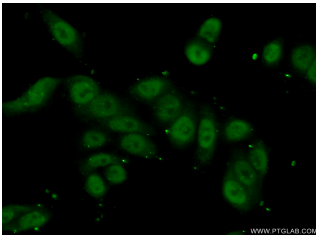
Isotype: IgG

Synonyms:

SMC3; BAM, Bamacan, BMH,
CDLS3, CSPG6, HCAP, SMC 3,
SMC protein 3, SMC3, SMC3L1



HeLa cells were subjected to SDS PAGE followed by western blot with 14185-1-AP (SMC3 antibody) at dilution of 1:300



Immunofluorescent analysis of (10% Formaldehyde) fixed HeLa cells using 14185-1-AP (SMC3 Antibody) at dilution of 1:50 and Alexa Fluor 488-conjugated AffiniPure Goat Anti-Rabbit IgG(H+L)

Applications

Tested applications:	ELISA, WB, IF
Species specificity:	Human, Mouse, Rat; other species not tested.
Calculated SMC3 MW:	142 kDa
Observed SMC3 MW:	140 kDa
Positive WB detected in	HeLa cells, Jurkat cells, mouse brain tissue
Positive IF detected in	HeLa cells
Recommended dilution:	WB: 1:500-1:5000 IF: 1:50-1:500

Application key: WB = Western blotting, IHC = Immunohistochemistry, IF = Immunofluorescence, IP = Immunoprecipitation

Immunogen information

Immunogen:	Ag5440
GenBank accession number:	BC047324
Gene ID (NCBI):	9126
Full name:	Structural maintenance of chromosomes 3

Product information

Purification method:	Antigen affinity purification
Storage:	PBS with 0.02% sodium azide and 50% glycerol pH 7.3. Store at -20°C.