

ZWILCH Polyclonal Antibody

Catalog number: 14281-1-AP

Size: 20 µg/150 µl

Source: Rabbit

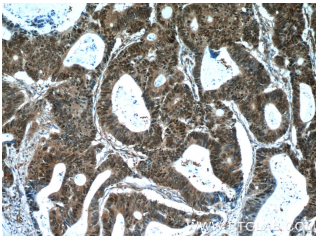
Isotype: IgG

Synonyms:

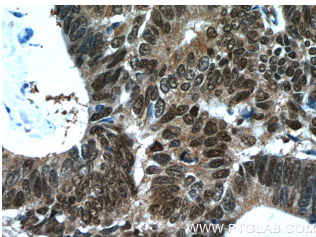
ZWILCH; FLJ10036, FLJ16343,

hZwilch, KNTC1AP, Protein

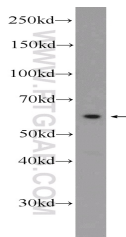
zwilch homolog, ZWILCH



Immunohistochemistry of paraffin-embedded human colon cancer tissue slide using 14281-1-AP (ZWILCH Antibody) at dilution of 1:50 (under 10x lens)



Immunohistochemistry of paraffin-embedded human colon cancer tissue slide using 14281-1-AP (ZWILCH Antibody) at dilution of 1:50 (under 40x lens)



PC-3 cells were subjected to SDS PAGE followed by western blot with 14281-1-AP (ZWILCH Antibody) at dilution of 1:500

Background

ZWILCH is a new component of the ZW10/ROD complex. The complex is a key player in the spindle checkpoint. ZWILCH has two isoforms with MW 67 kDa and 54 kDa.

Applications

| | |
|--------------------------|--|
| Tested applications: | ELISA, WB, IHC |
| Species specificity: | Human, Mouse, Rat; other species not tested. |
| Calculated ZWILCH MW: | 67 kDa |
| Observed ZWILCH MW: | ~60 kDa |
| Positive WB detected in | PC-3 cells |
| Positive IHC detected in | Human colon cancer tissue |
| Recommended dilution: | WB: 1:200-1:2000 IHC: 1:20-1:200 |

Application key: WB = Western blotting, IHC = Immunohistochemistry, IF = Immunofluorescence, IP = Immunoprecipitation

Immunogen information

| | |
|---------------------------|--|
| Immunogen: | Ag5454 |
| GenBank accession number: | BC036900 |
| Gene ID (NCBI): | 55055 |
| Full name: | Zwilch, kinetochore associated, homolog (Drosophila) |

Product information

| | |
|----------------------|---|
| Purification method: | Antigen affinity purification |
| Storage: | PBS with 0.1% sodium azide and 50% glycerol pH 7.3. Store at -20°C. |