

PLSCR1 Polyclonal Antibody

Catalog number: 11582-1-AP

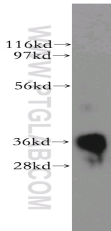
Size: 69 µg/150 µl

Source: Rabbit

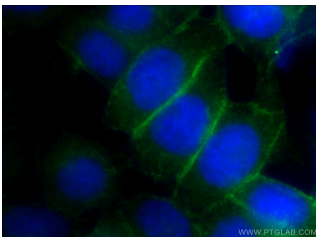
Isotype: IgG

Synonyms:

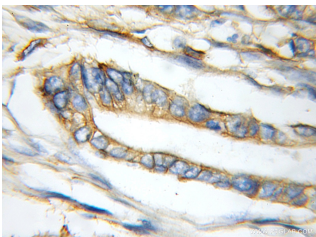
PLSCR1; MMTRA1B,
phospholipid scramblase 1, PL
scramblase 1, PLSCR1



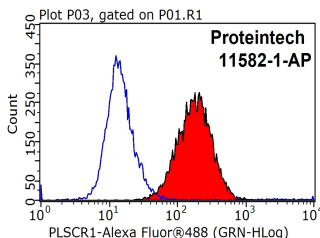
human skeletal muscle tissue were subjected to SDS PAGE followed by western blot with 11582-1-AP(PLSCR1 antibody) at dilution of 1:2000



Immunofluorescent analysis of HeLa cells using 11582-1-AP(PLSCR1 Antibody) at dilution of 1:50 and Alexa Fluor 488-conjugated AffiniPure Goat Anti-Rabbit IgG(H+L)



Immunohistochemical of paraffin-embedded human pancreas cancer using 11582-1-AP(PLSCR1 antibody) at dilution of 1:100 (under 10x lens)



1X10⁶ HeLa cells were

Applications

Tested applications:

ELISA, WB, IHC, FC, IF, IP

Cited applications:

IF, IHC, In-cell-Western, WB

Species specificity:

Human, Mouse, Rat; other species not tested.

Cited species:

Human, mouse

Calculated PLSCR1 MW:

318aa, 35 kDa

Observed PLSCR1 MW:

35 kDa

Positive WB detected in

Human skeletal muscle tissue, HEK-293 cells, human lung tissue, mouse lung tissue, mouse skeletal muscle tissue

Positive IP detected in

Mouse lung tissue

Positive IHC detected in

Human pancreas cancer tissue, human kidney tissue, human pancreas tissue, human spleen tissue

Positive IF detected in

HeLa cells

Positive FC detected in

HeLa cells

Recommended dilution:

WB: 1:1000-1:10000

IP: 1:200-1:2000

IHC: 1:20-1:200

IF: 1:20-1:200

FC: N/A

Application key: WB = Western blotting, IHC = Immunohistochemistry, IF = Immunofluorescence, IP = Immunoprecipitation

Immunogen information

Immunogen:

Ag2172

GenBank accession number:

BC021100

Gene ID (NCBI):

5359

Full name:

Phospholipid scramblase 1

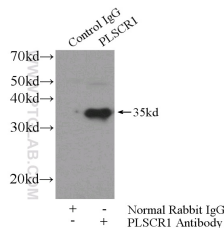
Product information

Purification method:

Antigen affinity purification

Storage:

PBS with 0.1% sodium azide and 50% glycerol pH 7.3. Store at -20°C.



IP Result of anti-PLSCR1

stained with 0.2ug PLSCR1 antibody (11582-1-AP, red) and control antibody (blue). Fixed with 90% MeOH blocked with 3% BSA (30 min). Alexa Fluor 488-conjugated AffiniPure Goat Anti-Rabbit IgG(H+L) with dilution 1:1000.

(IP:11582-1-AP, 4ug; Detection:11582-1-AP 1:500) with mouse lung tissue lysate 2800ug.