

Cytokeratin 15 Polyclonal Antibody

Catalog number: 10137-1-AP

Size: 37 µg/150 µl

Source: Rabbit

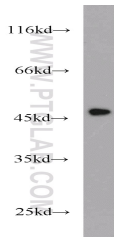
Isotype: IgG

Synonyms:

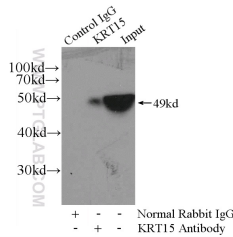
KRT15; CK 15, CK15,

Cytokeratin 15, K15, K1CO,

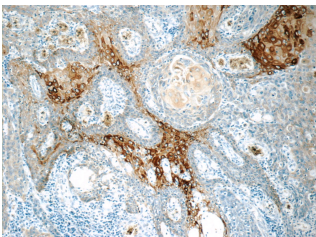
keratin 15, KRT15, KRTB



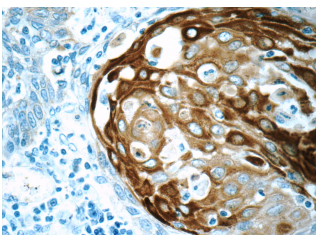
mouse thymus tissue were subjected to SDS PAGE followed by western blot with 10137-1-AP(KRT15 antibody) at dilution of 1:500



IP Result of anti-KRT15 (IP:10137-1-AP, 4µg; Detection:10137-1-AP 1:500) with A431 cells lysate 3040ug.



Immunohistochemistry of paraffin-embedded human oesophagus cancer tissue slide using 10137-1-AP(KRT15 Antibody) at dilution of 1:50 (under 10x lens)



Immunohistochemistry of paraffin-embedded human

Background

Keratins are a large family of proteins that form the intermediate filament cytoskeleton of epithelial cells, which are classified into two major sequence types. Type I keratins are a group of acidic intermediate filament proteins, including K9–K23, and the hair keratins Ha1–Ha8. Type II keratins are the basic or neutral counterparts to the acidic type I keratins, including K1–K8, and the hair keratins, Hb1–Hb6. Keratin 15 is a type I cytokeratin. It is found in some progenitor basal cells within complex epithelia.

Applications

Tested applications:	ELISA, WB, IP, IHC
Cited applications:	IF, IHC, WB
Species specificity:	Human, Mouse, Rat; other species not tested.
Cited species:	Human, mouse
Calculated Cytokeratin 15 MW:	49 kDa
Observed Cytokeratin 15 MW:	49 kDa
Positive WB detected in	Mouse thymus tissue
Positive IP detected in	A431 cells
Positive IHC detected in	Human oesophagus cancer tissue, human breast cancer tissue, human cervical cancer tissue, human skin tissue
Recommended dilution:	WB: 1:200-1:2000 IP: 1:200-1:2000 IHC: 1:20-1:200

Application key: WB = Western blotting, IHC = Immunohistochemistry, IF = Immunofluorescence, IP = Immunoprecipitation

Immunogen information

Immunogen:	Ag0185
GenBank accession number:	BC002641
Gene ID (NCBI):	3866
Full name:	Keratin 15

Product information

Purification method:	Antigen affinity purification
Storage:	PBS with 0.1% sodium azide and 50% glycerol pH 7.3. Store at -20°C.

oesophagus cancer tissue slide
using 10137-1-AP (KRT15
Antibody) at dilution of 1:50
(under 40x lens)