

## LEO1 Polyclonal Antibody

Catalog number: 12281-1-AP

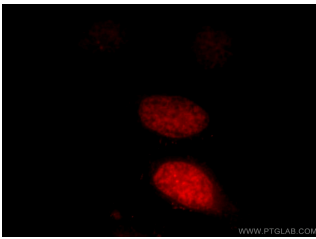
Size: 61 µg/150 µl

Source: Rabbit

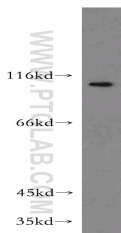
Isotype: IgG

Synonyms:

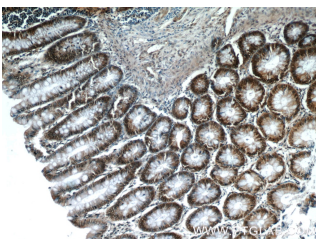
LEO1; LEO1, RDL



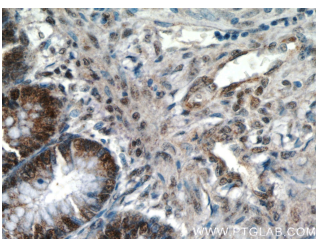
Immunofluorescent analysis of HeLa cells, using LEO1 antibody 12281-1-AP at 1:25 dilution and Rhodamine-labeled goat anti-rabbit IgG (red).



mouse heart tissue were subjected to SDS PAGE followed by western blot with 12281-1-AP(LEO1 antibody) at dilution of 1:500



Immunohistochemistry of paraffin-embedded human colon tissue slide using 12281-1-AP (LEO1 Antibody) at dilution of 1:50 (under 10x lens)



Immunohistochemistry of paraffin-embedded human colon tissue slide using 12281-1-AP (LEO1 Antibody) at

### Applications

Tested applications:	ELISA, WB, IF, IHC
Species specificity:	Human, Mouse, Rat; other species not tested.
Calculated LEO1 MW:	666aa, 75 kDa
Observed LEO1 MW:	105kd
Positive WB detected in	Mouse heart tissue, HeLa cells, HL-60 cells, human placenta tissue, Jurkat cells, mouse brain tissue, mouse skeletal muscle tissue
Positive IHC detected in	Human colon tissue
Positive IF detected in	Hela cells
Recommended dilution:	WB: 1:500-1:5000 IHC: 1:20-1:200 IF: 1:10-1:100

Application key: WB = Western blotting, IHC = Immunohistochemistry, IF = Immunofluorescence, IP = Immunoprecipitation

### Immunogen information

Immunogen:	Ag2932
GenBank accession number:	BC018147
Gene ID (NCBI):	123169
Full name:	Leo1, Paf1/RNA polymerase II complex component, homolog (S. cerevisiae)

### Product information

Purification method:	Antigen affinity purification
Storage:	PBS with 0.02% sodium azide and 50% glycerol pH 7.3. Store at -20°C.

dilution of 1:50 (under 40x  
lens)