

## TRAV20 Polyclonal Antibody

Catalog number: 13132-1-AP

Size: 20 µg/150 µl

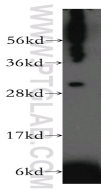
Source: Rabbit

Isotype: IgG

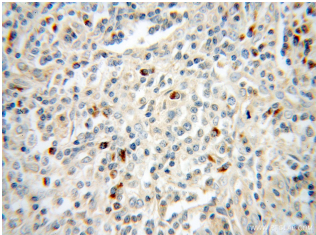
Synonyms:

TRAV20; TCRAV20S1;

TCRAV30S1



K-562 cells were subjected to SDS PAGE followed by western blot with 13132-1-AP (TRAV20 Antibody) at dilution of 1:1000



Immunohistochemistry of paraffin-embedded human lymphoma using 13132-1-AP (TRAV20 Antibody) at Dilution 1:50 (under 40x lens)

### Applications

Tested applications:	ELISA, WB, IHC
Species specificity:	Human; other species not tested.
Positive WB detected in:	K-562 cells
Calculated TRAV20 MW:	273aa, 31kd
Observed TRAV20 MW:	31kd
Positive IHC detected in:	Human lymphoma
Recommended dilution:	WB: 1:500-1:5000 IHC: 1:20-1:200

Application key: WB = Western blotting, IHC = Immunohistochemistry, IF = Immunofluorescence, IP = Immunoprecipitation, FC = Flow cytometry

### Immunogen information

Immunogen:	Ag3841
GenBank accession number:	BC025727
Gene ID (NCBI):	28663
Full name:	T cell receptor alpha variable 20

### Product information

Purification method:	Antigen affinity purification
Storage:	PBS with 0.02% sodium azide and 50% glycerol pH 7.3. Store at -20°C.