

CLASP2 Polyclonal Antibody

Catalog number: 12942-1-AP

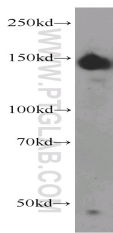
Size: 35 µg/150 µl

Source: Rabbit

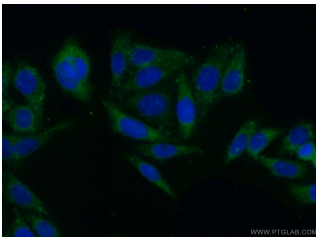
Isotype: IgG

Synonyms:

CLASP2; CLASP2, CLIP
associating protein 2, hOrbit2,
KIAA0627, Protein Orbit
homolog 2



human brain tissue were subjected to SDS PAGE followed by western blot with 12942-1-AP (CLASP2 antibody) at dilution of 1:500



Immunofluorescent analysis of HepG2 cells using 12942-1-AP (CLASP2 Antibody) at dilution of 1:50 and Alexa Fluor 488-conjugated AffiniPure Goat Anti-Rabbit IgG(H+L)

Background

CLASP2 (CLIP-associating protein 2) is a brain specific protein belongs to CLASP family. CLASP1 and CLASP2 regulate microtubule plus-end dynamics in brine cortex. CLASP2 is required for the orientation of stabilized microtubules toward the leading edge, It may act at the cell cortex to enhance the frequency of rescue of depolymerizing microtubules by attaching their plus-ends to cortical platforms. Phosphorylation of CLASP2 by GSK3B may negatively regulate binding to microtubule lattices in lamella.

Applications

Tested applications:	ELISA, WB, IF
Cited applications:	WB
Species specificity:	Human, Mouse; other species not tested.
Cited species:	Mouse
Calculated CLASP2 MW:	1294aa, 141 kDa
Observed CLASP2 MW:	140-160 kDa
Positive WB detected in	Human brain tissue, HEK-293 cells
Positive IF detected in	HepG2 cells
Recommended dilution:	WB: 1:500-1:5000 IF: 1:50-1:500

Application key: WB = Western blotting, IHC = Immunohistochemistry, IF = Immunofluorescence, IP = Immunoprecipitation

Immunogen information

Immunogen:	Ag4012
GenBank accession number:	BC029035
Gene ID (NCBI):	23122
Full name:	Cytoplasmic linker associated protein 2

Product information

Purification method:	Antigen affinity purification
Storage:	PBS with 0.02% sodium azide and 50% glycerol pH 7.3. Store at -20°C.