

## SLC25A45 Polyclonal Antibody

Catalog number: 14160-1-AP

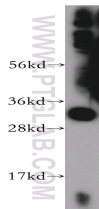
Size: 32 µg/150 µl

Source: Rabbit

Isotype: IgG

Synonyms:

SLC25A45;



mouse skeletal muscle tissue were subjected to SDS PAGE followed by western blot with 14160-1-AP(SLC25A45 Antibody) at dilution of 1:1000

### Applications

Tested applications:	ELISA, WB
Species specificity:	Human, mouse, rat; other species not tested.
Positive WB detected in:	Mouse skeletal muscle tissue, SH-SY5Y cells
Calculated SLC25A45 MW:	335aa,36kd
Observed SLC25A45 MW:	32kd
Recommended dilution:	WB: 1:500-1:5000

Application key: WB = Western blotting, IHC = Immunohistochemistry, IF = Immunofluorescence, IP = Immunoprecipitation, FC = Flow cytometry

### Immunogen information

Immunogen:	Ag5342
GenBank accession number:	BC041100
Gene ID (NCBI):	283130
Full name:	Solute carrier family 25, member 45

### Product information

Purification method:	Antigen affinity purification
Storage:	PBS with 0.02% sodium azide and 50% glycerol pH 7.3. Store at -20°C.