

PTPRE Polyclonal Antibody

Catalog number: 13922-1-AP

Size: 20 µg/150 µl

Source: Rabbit

Isotype: IgG

Synonyms:

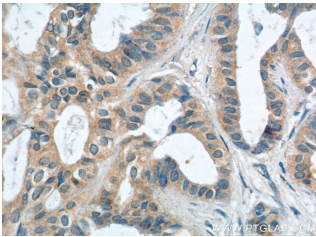
PTPRE; DKFZp313F1310,

FLJ57799, FLJ58245, HPTPE,

PTPE, PTPRE, R PTP EPSILON



HL-60 cells were subjected to SDS PAGE followed by western blot with 13922-1-AP(PTPRE antibody) at dilution of 1:300



Immunohistochemistry of paraffin-embedded human breast cancer tissue slide using 13922-1-AP(PTPRE Antibody) at dilution of 1:200 (under 40x lens).

Applications

Tested applications:	ELISA, WB, IHC
Species specificity:	Human; other species not tested.
Calculated PTPRE MW:	81 kDa
Observed PTPRE MW:	81 kDa
Positive WB detected in	HL-60 cells
Positive IHC detected in	Human breast cancer tissue, human liver tissue
Recommended dilution:	WB: 1:200-1:1000 IHC: 1:50-1:500

Application key: WB = Western blotting, IHC = Immunohistochemistry, IF = Immunofluorescence, IP = Immunoprecipitation

Immunogen information

Immunogen:	Ag4932
GenBank accession number:	BC050062
Gene ID (NCBI):	5791
Full name:	Protein tyrosine phosphatase, receptor type, E

Product information

Purification method:	Antigen affinity purification
Storage:	PBS with 0.02% sodium azide and 50% glycerol pH 7.3. Store at -20°C.