

MTMR8 Polyclonal Antibody

Catalog number: 12299-1-AP

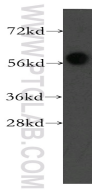
Size: 28 µg/150 µl

Source: Rabbit

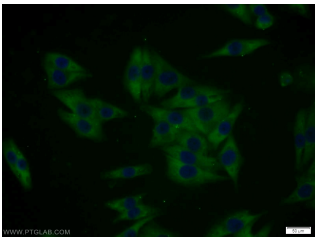
Isotype: IgG

Synonyms:

MTMR8; FLJ20126, MTMR8,
myotubularin related protein 8



HeLa cells were subjected to SDS PAGE followed by western blot with 12299-1-AP (MTMR8 antibody) at dilution of 1:300



Immunofluorescent analysis of A375 cells using 12299-1-AP (MTMR8 Antibody) at dilution of 1:25 and Alexa Fluor 488-conjugated AffiniPure Goat Anti-Rabbit IgG(H+L)

Applications

Tested applications:	ELISA, WB, IF
Species specificity:	Human; other species not tested.
Calculated MTMR8 MW:	704aa, 79 kDa
Observed MTMR8 MW:	55-58kd
Positive WB detected in	HeLa cells, A375 cells, human placenta tissue
Positive IF detected in	A375 cells
Recommended dilution:	WB: 1:500-1:5000 IF: 1:10-1:100

Application key: WB = Western blotting, IHC = Immunohistochemistry, IF = Immunofluorescence, IP = Immunoprecipitation

Immunogen information

Immunogen:	Ag2944
GenBank accession number:	BC012399
Gene ID (NCBI):	55613
Full name:	Myotubularin related protein 8

Product information

Purification method:	Antigen affinity purification
Storage:	PBS with 0.02% sodium azide and 50% glycerol pH 7.3. Store at -20°C.