

VBP1 Polyclonal Antibody

Catalog number: 14345-1-AP

Size: 33 µg/150 µl

Source: Rabbit

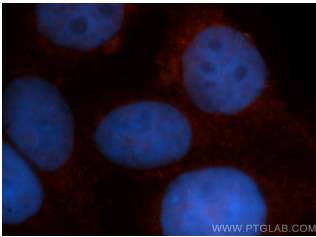
Isotype: IgG

Synonyms:

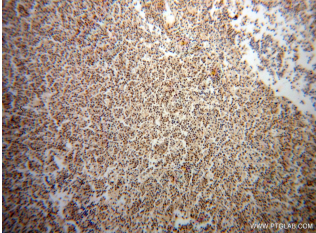
VBP1; HIBBJ46, PFD3, PFDN3,

Prefoldin subunit 3, VBP 1,

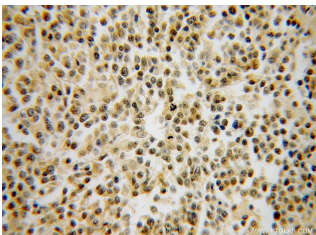
VBP1, VHL binding protein 1



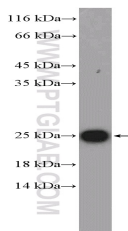
Immunofluorescent analysis of HepG2 cells, using VBP1 antibody 14345-1-AP at 1:50 dilution and Rhodamine-labeled goat anti-rabbit IgG (red). Blue pseudocolor = DAPI (fluorescent DNA dye).



Immunohistochemical of paraffin-embedded human lymphoma using 14345-1-AP (VBP1 antibody) at dilution of 1:100 (under 10x lens)



Immunohistochemical of paraffin-embedded human lymphoma using 14345-1-AP (VBP1 antibody) at dilution of 1:100 (under 40x lens)



rat brain tissue were

Applications

Tested applications:	ELISA, IHC, IF, WB
Species specificity:	Human, Mouse, Rat; other species not tested.
Calculated VBP1 MW:	23 kDa
Observed VBP1 MW:	23-25 kDa
Positive WB detected in	Rat brain tissue, C6 cells, HepG2 cells, K-562 cells, mouse liver tissue, NIH/3T3 cells
Positive IHC detected in	Human lymphoma tissue
Positive IF detected in	HepG2 cells
Recommended dilution:	WB: 1:500-1:5000 IHC: 1:20-1:200 IF: 1:20-1:200

Application key: WB = Western blotting, IHC = Immunohistochemistry, IF = Immunofluorescence, IP = Immunoprecipitation

Immunogen information

Immunogen:	Ag5685
GenBank accession number:	BC046094
Gene ID (NCBI):	7411
Full name:	Von Hippel-Lindau binding protein 1

Product information

Purification method:	Antigen affinity purification
Storage:	PBS with 0.02% sodium azide and 50% glycerol pH 7.3. Store at -20°C.

subjected to SDS PAGE
followed by western blot with
14345-1-AP(VBP1 Antibody)
at dilution of 1:1000