

## ARHGEF10 Polyclonal Antibody

Catalog number: 11112-1-AP

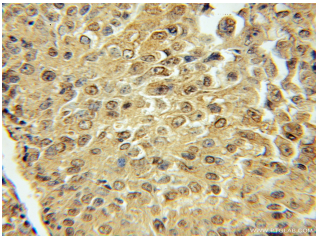
Size: 20 µg/150 µl

Source: Rabbit

Isotype: IgG

Synonyms:

ARHGEF10; ARHGEF10,  
DKFZp686H0726, GEF10,  
KIAA0294



Immunohistochemical of paraffin-embedded human lung cancer using 11112-1-AP (ARHGEF10 antibody) at dilution of 1:50 (under 10x lens)

### Background

ARHGEF10 (Rho guanine nucleotide exchange factor 10), also named as KIAA0294, is a member of the family of Rho guanine nucleotide exchange factors (GEFs), which are implicated in neural morphogenesis and connectivity and regulate the activity of small Rho GTPases by catalyzing the exchange of bound GDP by GTP (PMID:14508709). The deduced 1,121-amino acid protein shares significant similarity with cell signaling proteins (PMID:9205841). Defects in ARHGEF10 are the cause of slowed nerve conduction velocity (SNCV) (PMID:14508709). It has 5 isoforms produced by alternative splicing.

### Applications

Tested applications:	ELISA, IHC
Species specificity:	Human, Mouse, Rat; other species not tested.
Calculated ARHGEF10 MW:	147kd
Observed ARHGEF10 MW:	68kd, 75kd, 148-152kd
Positive IHC detected in	Human lung cancer tissue
Recommended dilution:	IHC: 1:20-1:200

Application key: WB = Western blotting, IHC = Immunohistochemistry, IF = Immunofluorescence, IP = Immunoprecipitation

### Immunogen information

Immunogen:	Ag1605
GenBank accession number:	BC036809
Gene ID (NCBI):	9639
Full name:	Rho guanine nucleotide exchange factor (GEF) 10

### Product information

Purification method:	Antigen affinity purification
Storage:	PBS with 0.1% sodium azide and 50% glycerol pH 7.3. Store at -20°C.