

ETS2 Polyclonal Antibody

Catalog number: 12280-1-AP

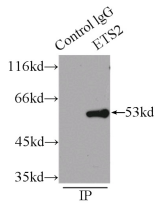
Size: 47 µg/150 µl

Source: Rabbit

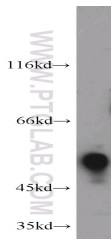
Isotype: IgG

Synonyms:

ETS2; ETS2, ETS2IT1, Protein C
ets 2



IP Result of anti-ETS2 (IP:12280-1-AP,
3µg; Detection:12280-1-AP 1:600)
with HeLa cells lysate 5000µg.



K-562 cells were subjected to SDS
PAGE followed by western blot with
12280-1-AP(ETS2 antibody) at
dilution of 1:1000

Applications

Tested applications:	ELISA, IP, WB
Species specificity:	Human,Mouse,Rat; other species not tested.
Calculated ETS2 MW:	469aa,53 kDa
Observed ETS2 MW:	53 kDa
Positive WB detected in	K-562 cells, HeLa cells, MCF7 cells, mouse kidney tissue, PC-3 cells
Positive IP detected in	HeLa cells
Recommended dilution:	WB: 1:500-1:5000 IP: 1:200-1:2000

Application key: WB = Western blotting, IHC = Immunohistochemistry, IF = Immunofluorescence, IP = Immunoprecipitation

Immunogen information

Immunogen:	Ag2929
GenBank accession number:	BC017040
Gene ID (NCBI):	2114
Full name:	V-ets erythroblastosis virus E26 oncogene homolog 2 (avian)

Product information

Purification method:	Antigen affinity purification
Storage:	PBS with 0.1% sodium azide and 50% glycerol pH 7.3. Store at -20°C.