

Cytochrome c Polyclonal Antibody

Catalog number: 10993-1-AP

Size: 37 µg/150 µl

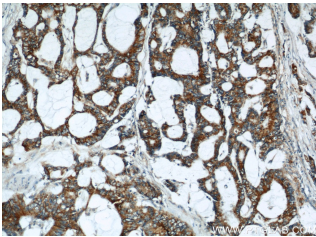
Source: Rabbit

Isotype: IgG

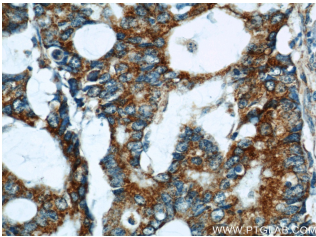
Synonyms:

CYCS; CYC, CYCS, Cytochrome c, cytochrome c, somatic, HCS,

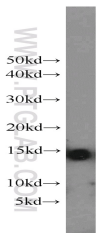
THC4



Immunohistochemical of paraffin-embedded human colon cancer using 10993-1-AP (CYCS antibody) at dilution of 1:50 (under 10x lens)



Immunohistochemical of paraffin-embedded human colon cancer using 10993-1-AP (CYCS antibody) at dilution of 1:50 (under 40x lens)



rat skeletal muscle tissue were subjected to SDS PAGE followed by western blot with 10993-1-AP (CYCS antibody) at dilution of 1:800

Background

Cytochrome c is a 12-15 kDa electron transporting protein located in the inner mitochondrial membrane. As a part of respiratory chain, cytochrome c plays a critical role in the process of oxidative phosphorylation and ATP producing. Besides, cytochrome c also gets implicated in apoptosis process. Upon apoptotic stimulation, cytochrome c can be released from mitochondria into cytoplasm, which is required for caspase-3 activation and the occurrence of apoptosis.

Applications

Tested applications:	ELISA, IHC, WB
Cited applications:	IF, IHC, WB
Species specificity:	Human, Mouse, Rat; other species not tested.
Cited species:	Human, mouse, rat, rice
Calculated Cytochrome c MW:	12 kDa
Observed Cytochrome c MW:	12-15 kDa
Positive WB detected in	Rat skeletal muscle tissue, MCF7 cells, mouse kidney tissue, mouse skeletal muscle tissue, NIH/3T3 cells, rat liver tissue
Positive IHC detected in	Human colon cancer tissue, human breast cancer tissue, human liver tissue
Recommended dilution:	WB: 1:200-1:2000 IHC: 1:20-1:400

Application key: WB = Western blotting, IHC = Immunohistochemistry, IF = Immunofluorescence, IP = Immunoprecipitation

Immunogen information

Immunogen:	Ag1455
GenBank accession number:	BC009578
Gene ID (NCBI):	54205
Full name:	Cytochrome c, somatic

Product information

Purification method:	Antigen affinity purification
Storage:	PBS with 0.1% sodium azide and 50% glycerol pH 7.3. Store at -20°C.