

CP110 Polyclonal Antibody

Catalog number: 12780-1-AP

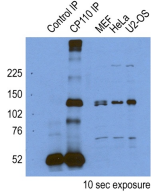
Size: 20 µg/150 µl

Source: Rabbit

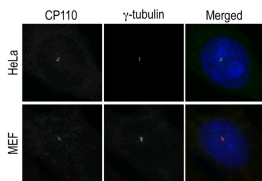
Isotype: IgG

Synonyms:

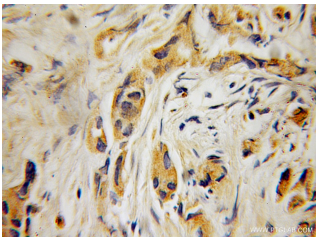
CP110; Centrosomal protein of 110 kDa, CP110, CP110 protein, DKFZp781G1416, KIAA0419



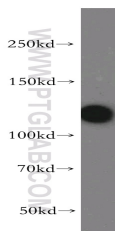
IP result of CP110(12780-1-AP) by Dr. Corbit, Kevin.



IF result(Centrioles) of anti-CP110(12780-1-AP) by Dr. Corbit Kevin.



Immunohistochemical of paraffin-embedded human prostate cancer using 12780-1-AP(CP110 antibody) at dilution of 1:100 (under 10x lens)



HeLa cells were subjected to SDS PAGE followed by western blot with 12780-1-

Background

CP110, also named as CCP110 and KIAA0419, is an 110kDa protein. This gene is different to the gene CEP110 (geneID:11064; CNTRL). CP110 is a centriolar protein that positively regulates centriole duplication while restricting centriole elongation and ciliogenesis. And it acts as a key negative regulator of ciliogenesis in collaboration with CEP97 by capping the mother centriole thereby preventing cilia formation.

Applications

Tested applications:	ELISA, WB, IHC, IF, IP, FC
Cited applications:	IF, WB
Species specificity:	Human, Mouse, Rat; other species not tested.
Cited species:	Human, mouse, rat
Calculated CP110 MW:	991aa,111 kDa
Observed CP110 MW:	113kd
Positive WB detected in	HeLa cells, K-562 cells
Positive IP detected in	HeLa cells
Positive IHC detected in	Human prostate cancer tissue
Positive IF detected in	MEF/HeLa cells
Positive FC detected in	HeLa cells
Recommended dilution:	WB: 1:500-1:5000 IP: 1:500-1:5000 IHC: 1:20-1:200 IF: 1:20-1:200 FC: N/A

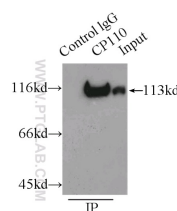
Application key: WB = Western blotting, IHC = Immunohistochemistry, IF = Immunofluorescence, IP = Immunoprecipitation

Immunogen information

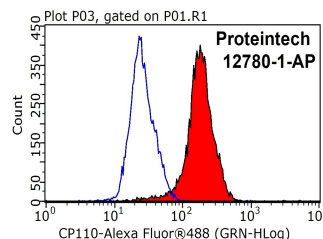
Immunogen:	Ag3489
GenBank accession number:	BC036654
Gene ID (NCBI):	9738
Full name:	CP110 protein

Product information

Purification method:	Antigen affinity purification
Storage:	PBS with 0.02% sodium azide and 50% glycerol pH 7.3. Store at -20°C.



IP Result of anti-CP110 (IP:12780-1-AP, 3µg; Detection:12780-1-AP 1:1000)



1X10⁶ HeLa cells were stained with .2µg CP110 antibody (12780-1-AP, red)

**AP(CP110 antibody) at
dilution of 1:400**

with HeLa cells lysate 3000ug.

**and control antibody (blue).
Fixed with 4% PFA blocked
with 3% BSA (30 min). Alexa
Fluor 488-conjugated
AffiniPure Goat Anti-Rabbit
IgG(H+L) with dilution 1:1000.**