

Cytokeratin 6A Polyclonal Antibody

Catalog number: 10590-1-AP

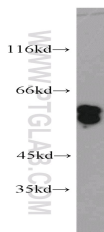
Size: 32 µg/150 µl

Source: Rabbit

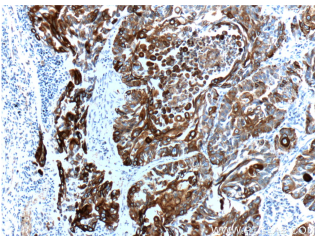
Isotype: IgG

Synonyms:

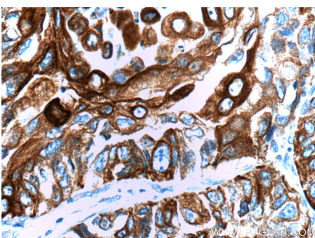
KRT6A; CK 6A, CK 6D, CK6A, CK6C, CK6D, Cytokeratin 6A, Cytokeratin 6D, Hom s 5, K6A, K6C, K6D, keratin 6A, KRT conserve, KRT6, KRT6A, KRT6C, KRT6D, Type II keratin Kb6



A431 cells were subjected to SDS PAGE followed by western blot with 10590-1-AP(KRT6A antibody) at dilution of 1:2000



Immunohistochemistry of paraffin-embedded human lung cancer tissue slide using 10590-1-AP(KRT6A Antibody) at dilution of 1:200 (under 10x lens).



Immunohistochemistry of paraffin-embedded human lung cancer tissue slide using 10590-1-AP(KRT6A Antibody) at dilution of 1:200 (under 40x lens).

Background

Keratins are a large family of proteins that form the intermediate filament cytoskeleton of epithelial cells, which are classified into two major sequence types. Type I keratins are a group of acidic intermediate filament proteins, including K9–K23, and the hair keratins Ha1–Ha8. Type II keratins are the basic or neutral counterparts to the acidic type I keratins, including K1–K8, and the hair keratins, Hb1–Hb6. Keratin 6 is a type II keratin. It is used as marker for epidermal hyperproliferation and differentiation. Three keratin 6 isoforms were found, ketatin 6A,6B and 6C. They share more than 99% identical DNA sequence.

Applications

Tested applications:	ELISA, WB, FC, IF, IHC
Species specificity:	Human, Mouse, Rat; other species not tested.
Calculated Cytokeratin 6A MW:	60 kDa
Observed Cytokeratin 6A MW:	56 kDa
Positive WB detected in	A431 cells, A375 cells, HeLa cells, MCF7 cells, rat skin tissue, U-251 cells
Positive IHC detected in	Human lung cancer tissue, human oesophagus tissue, human prostate cancer tissue, human skin tissue, human tonsil tissue
Positive IF detected in	A431 cells, Hela cells
Positive FC detected in	HeLa cells
Recommended dilution:	WB: 1:1000-1:10000 IHC: 1:20-1:200 IF: 1:20-1:200 FC: N/A

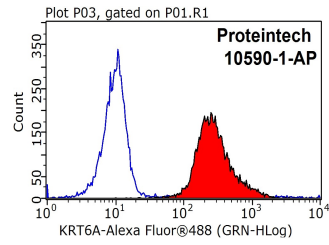
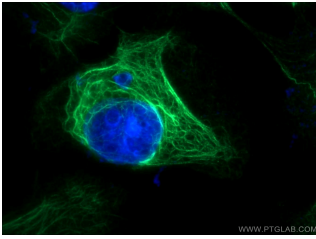
Application key: WB = Western blotting, IHC = Immunohistochemistry, IF = Immunofluorescence, IP = Immunoprecipitation

Immunogen information

Immunogen:	Ag0882
GenBank accession number:	BC008807
Gene ID (NCBI):	3853
Full name:	Keratin 6A

Product information

Purification method:	Antigen affinity purification
Storage:	PBS with 0.1% sodium azide and 50% glycerol pH 7.3. Store at -20°C.



Immunofluorescent analysis of A431 cells using 10590-1-AP (KRT6A Antibody) at dilution of 1:50 and Alexa Fluor 488-conjugated AffiniPure Goat Anti-Rabbit IgG(H+L)

1X10⁶ HeLa cells were stained with 0.2ug KRT6A antibody (10590-1-AP, red) and control antibody (blue). Fixed with 90% MeOH blocked with 3% BSA (30 min). Alexa Fluor 488-conjugated AffiniPure Goat Anti-Rabbit IgG(H+L) with dilution 1:1000.