

## SPDEF Polyclonal Antibody

Catalog number: 11467-1-AP

Size: 47 µg/150 µl

Source: Rabbit

Isotype: IgG

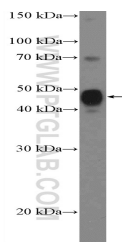
Synonyms:

SPDEF; bA375E1.3, PDEF,

Prostate derived Ets factor,

Prostate specific Ets, PSE, RP11

375E1\_\_A.3, SPDEF



MCF-7 cells were subjected to SDS PAGE followed by western blot with 11467-1-AP( SPDEF Antibody) at dilution of 1:1000

### Applications

Tested applications:	ELISA, WB
Species specificity:	Human,Mouse,Rat; other species not tested.
Calculated SPDEF MW:	335aa,38 kDa
Observed SPDEF MW:	38-44 kDa
Positive WB detected in	MCF-7 cells
Recommended dilution:	WB: 1:500-1:5000

Application key: WB = Western blotting, IHC = Immunohistochemistry, IF = Immunofluorescence, IP = Immunoprecipitation

### Immunogen information

Immunogen:	Ag2020
GenBank accession number:	BC021299
Gene ID (NCBI):	25803
Full name:	SAM pointed domain containing ets transcription factor

### Product information

Purification method:	Antigen affinity purification
Storage:	PBS with 0.1% sodium azide and 50% glycerol pH 7.3. Store at -20°C.